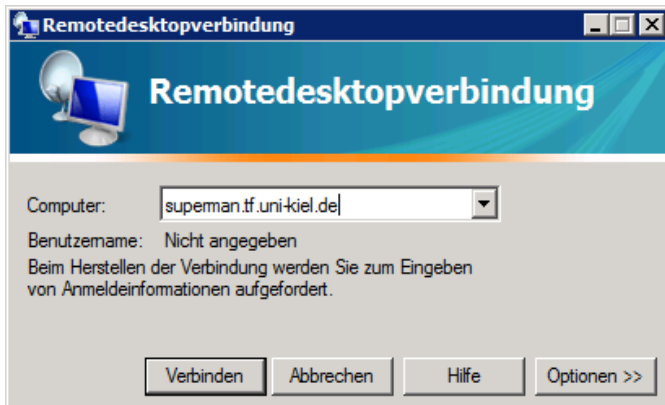
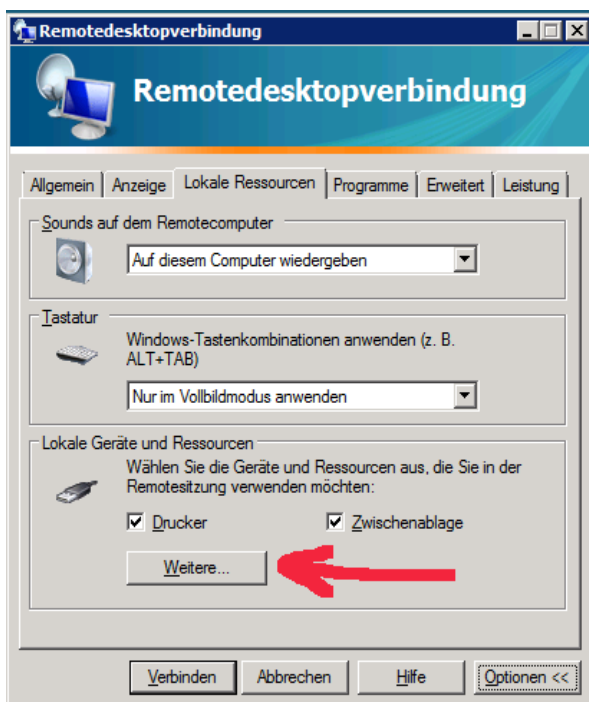


How to start a Windows Remote Desktop for to log in to the windows servers of the Faculty of Engineering from outside the faculty.



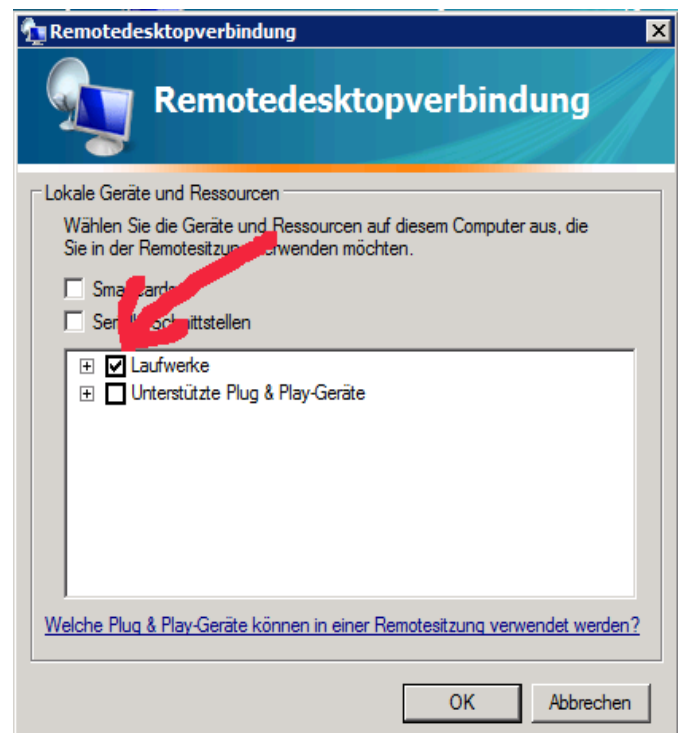
You start the program RemoteDesktopConnection (Remotedesktopverbindung) from *Programs/Acessoires* resp. *Programme/Zubehör*.

Enter *jupiter.tf.uni-kiel.de* resp. *spiderman.tf.uni-kiel.de*



Under *Options/Optionen* you can choose reasonable settings like *Display/Anzeige* or the data transfer rate.

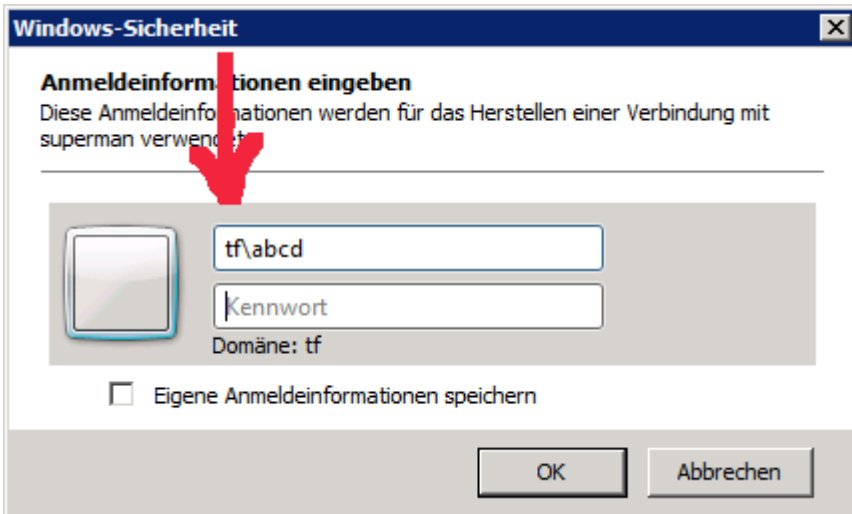
For data transfer between your local (home-) computer and the TF-Windows-Server you have to enable your local drives under *Optionen/Lokale Ressourcen/Weitere...*



Click on *Laufwerke* and say *OK*.

Click *Connect / Verbinden*.

Depending on your RDP-Client, you may see different logon screens:



As your username you may give in the domain name you want to log in first, followed by a backslash. So, in example, if your username is abcd, then you give in as your login name *tf\abcd*.

Hint for giving in your password: Sometimes the keyboard layouts are not translated correctly. If you cannot login, simply type your password in the username field for to see, whether it is displayed as you expect it.



If the logon screen looks like this, you have to choose „Anderer Benutzer“ and give in your Username like *tf\<username>* as described above.

Linux users can use an rdesktop client like www.rdesktop.org.