

Installing and using an OpenVPN-Client (Tunnelblick) on Mac OS X

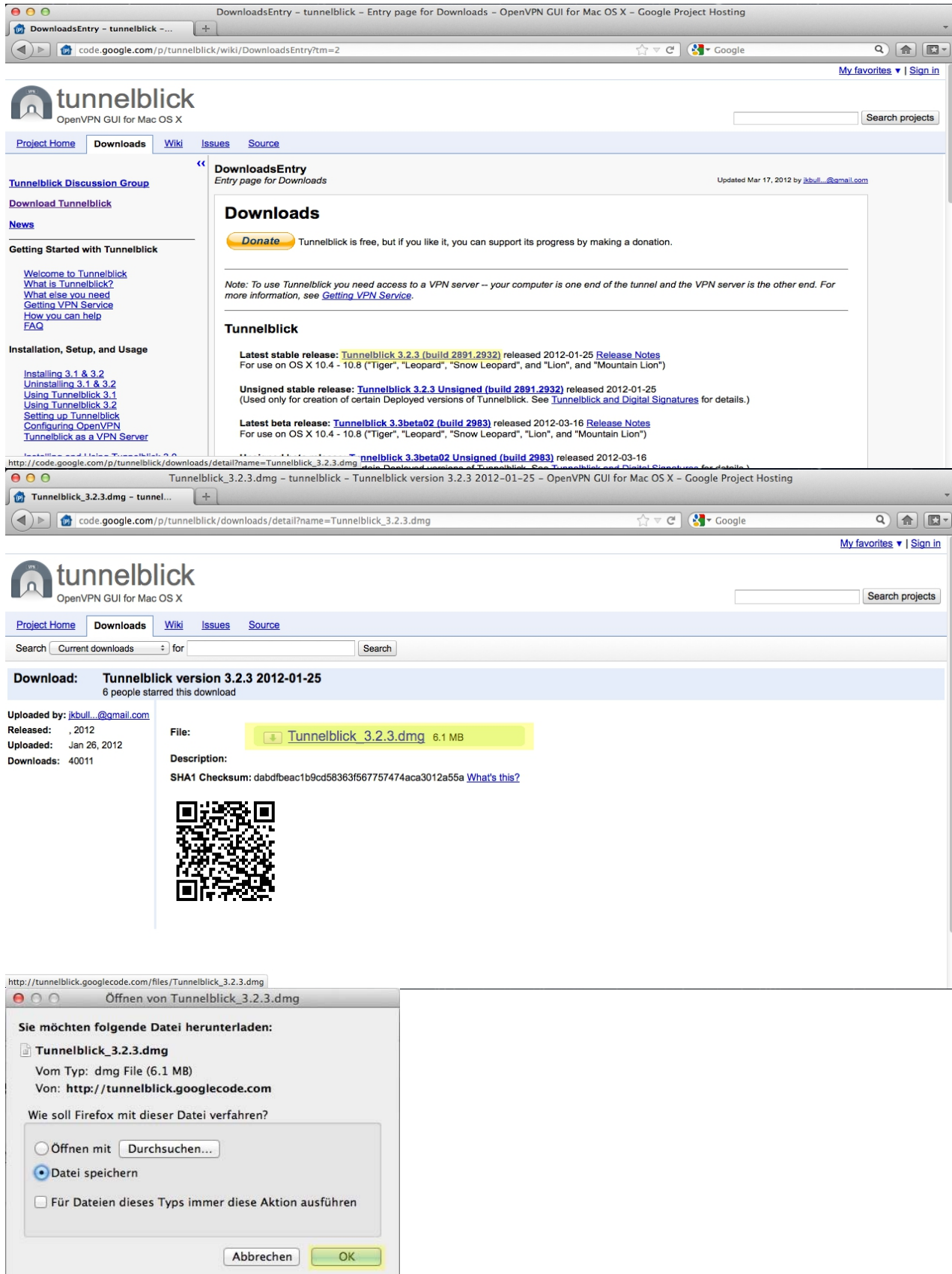
Step-by-step

Note: This guide was created using Mac OS X 10.7.3 and Tunnelblick 3.2.3 in early 2012. The IT Group won't give any further advices.

1. Download Tunnelblick from the projects download site:

<https://code.google.com/p/tunnelblick/wiki/DownloadsEntry>

Browse to the download site with your preferred web-browser and download the tunnelblick-diskimage-file.



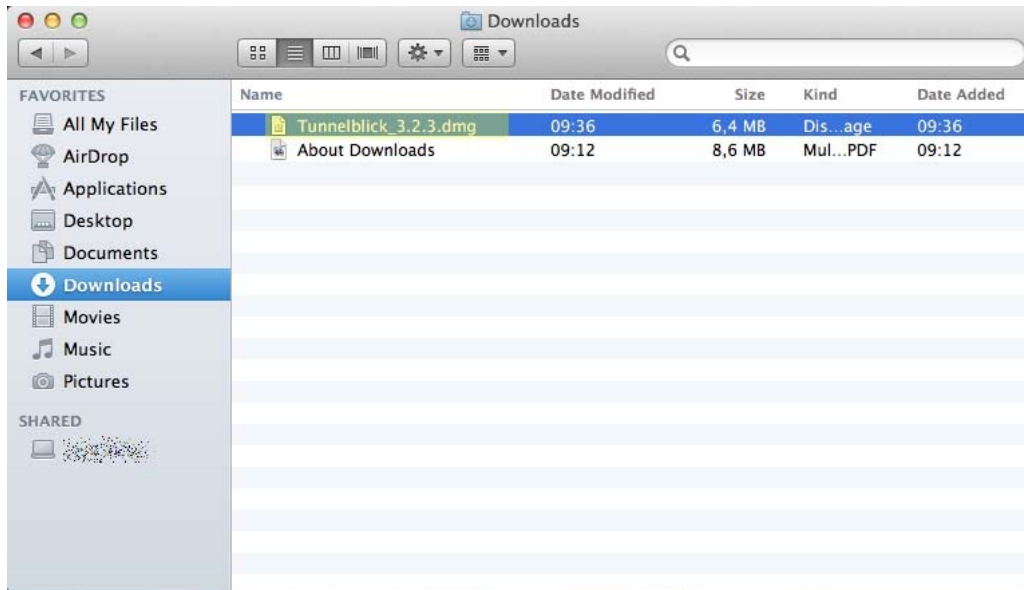
The screenshot shows the Tunnelblick project page on Google Project Hosting. The page is titled "DownloadsEntry - tunnelblick - Entry page for Downloads - OpenVPN GUI for Mac OS X - Google Project Hosting". The main content area is titled "Downloads" and lists the latest stable release: Tunnelblick 3.2.3 (build 2891.2932) released 2012-01-25. It also lists the latest beta release: Tunnelblick 3.3beta02 (build 2983) released 2012-03-16. The page includes a "Download Tunnelblick" link and a "Getting Started with Tunnelblick" section.

The second screenshot shows the "Download: Tunnelblick version 3.2.3 2012-01-25" page. It displays the file "Tunnelblick 3.2.3.dmg" (6.1 MB) and provides the SHA1 Checksum: d4bdfbeac1b9cd58363f567757474aca3012a55a. A QR code is also present.

The third screenshot shows a Firefox download dialog box for "Tunnelblick_3.2.3.dmg". The dialog box asks "Wie soll Firefox mit dieser Datei verfahren?" (How should Firefox handle this file?) and offers three options: "Öffnen mit Durchsuchen..." (Open with Search...), "Datei speichern" (Save file), and "Für Dateien dieses Typs immer diese Aktion ausführen" (Always use this action for files of this type). The "Datei speichern" option is selected.

2. Mount disk-image

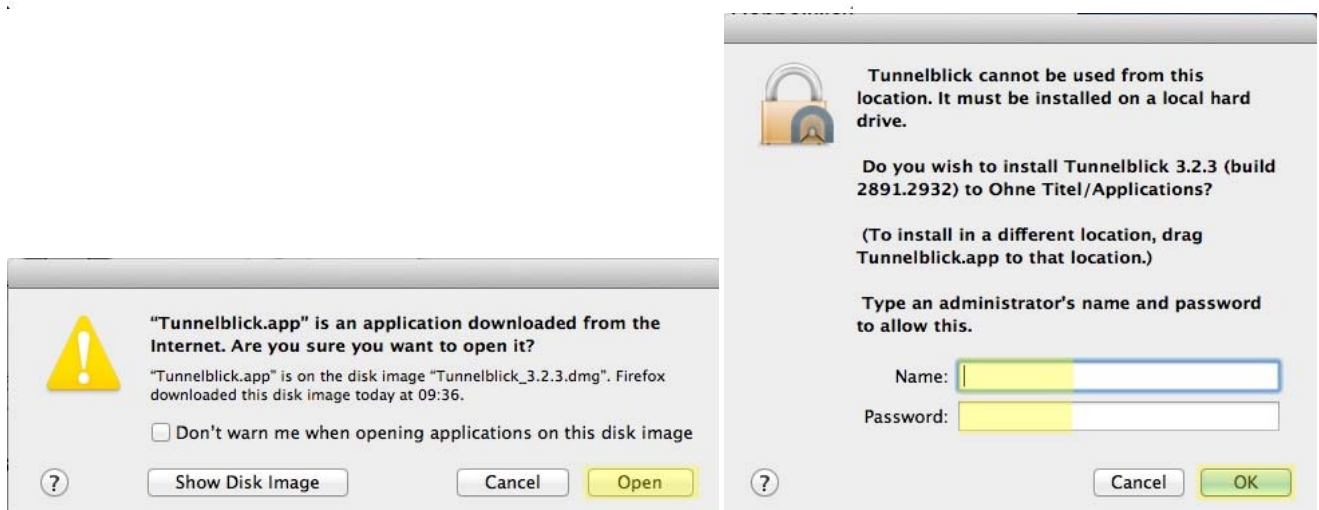
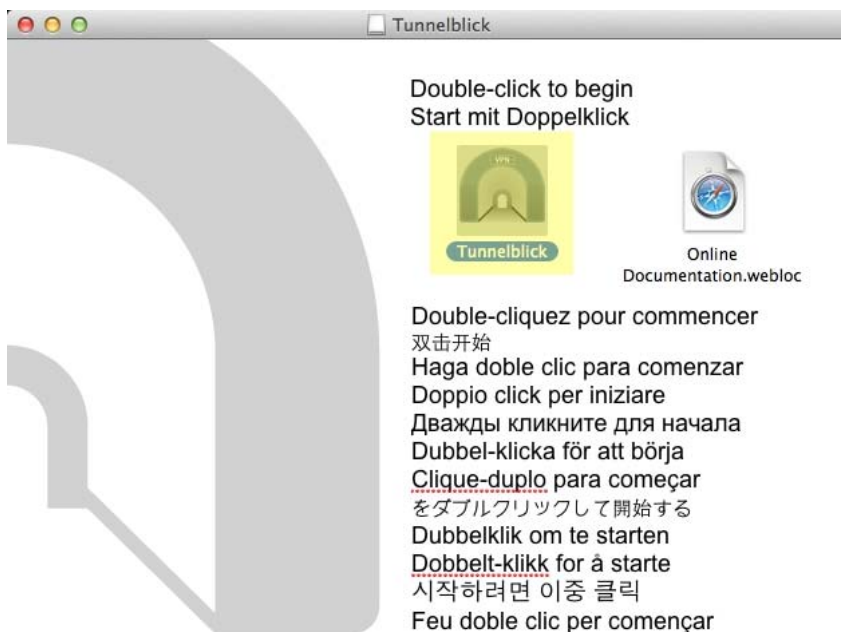
Mount the downloaded apple-disk-image-file by double-click on it.



3. Execute the installer

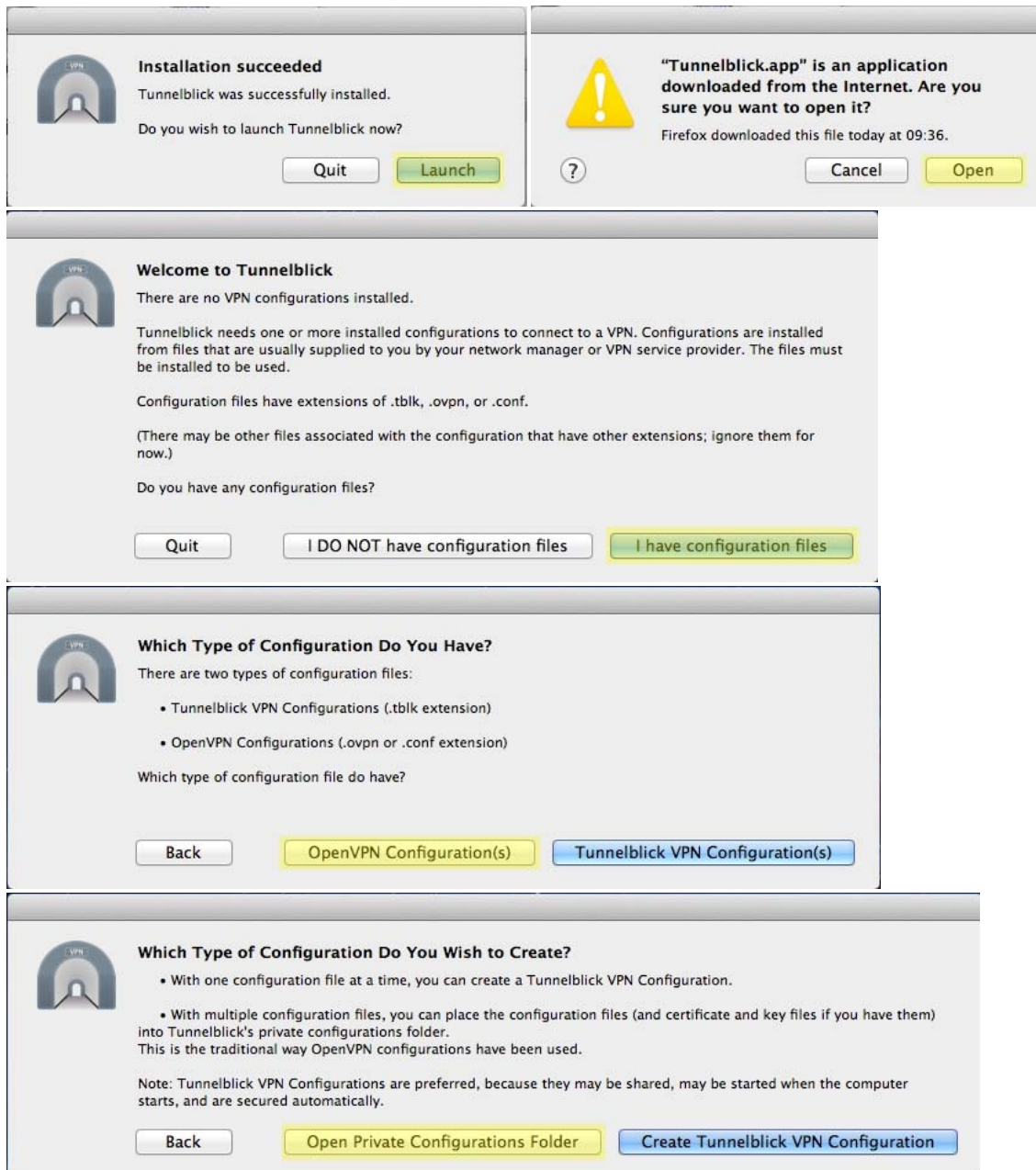
Execute the installer by double-click on the Tunnelblick-icon in the pop-uped window. You get warned because it is a downloaded executable. You can ignore this warning.

You need administrator privileges to copy needed files to your hard disk. Enter the administrator account details in the following dialog.



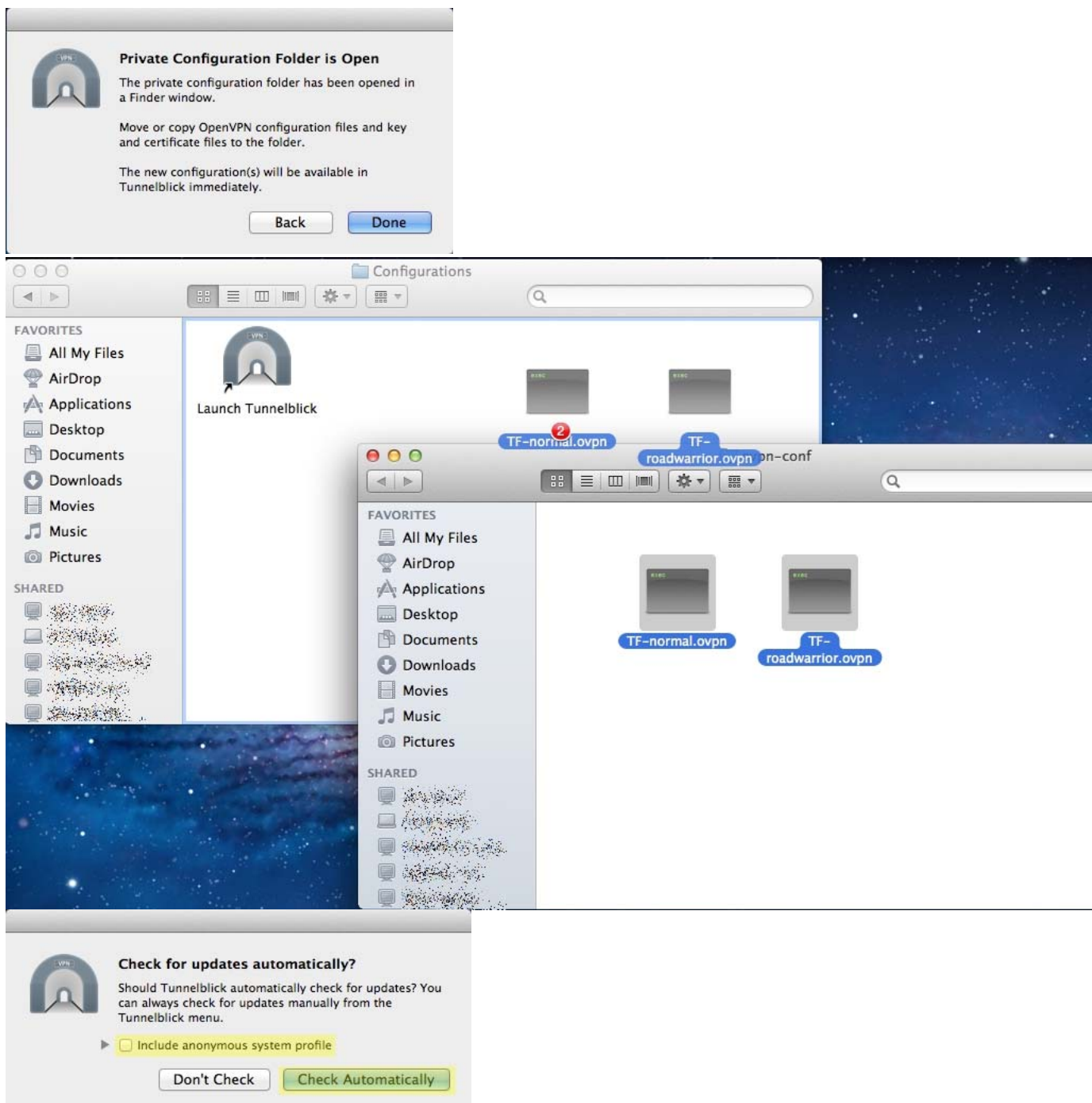
4. Configure client

Installation finishes and you can instruct the installer to execute the client. You once again have to confirm that you want to start a downloaded application. When the client starts the first time it asks you for several configuration details.



5. Copy configuration files and finish configuration

Download the zip-archive containing the ovpn-configuration-files from this site: <http://www.tf.uni-kiel.de/itg/de/services/vpn/verbindungsprofile> . Extract it and copy the files to the folder opened by the configuration assistant (normally /Users/USER/Library/Application Support/Tunnelblick/Configurations/). Now back in the configuration-assistant window you can click on "Done". Now the assistant asks if you want to send information of your system and if the client should update automatically.



6. Connect to the VPN

Now everything is setup and you can connect to the VPN through the icon in the upper right corner. The first time you use a connection-profile the system informs you that it has to change permissions. Therefore you need the administrator account informations.



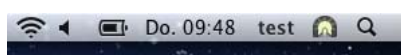
7. Authenticate using your TF-Account

The client asks for your credentials. Enter username and password of your TF-Account.



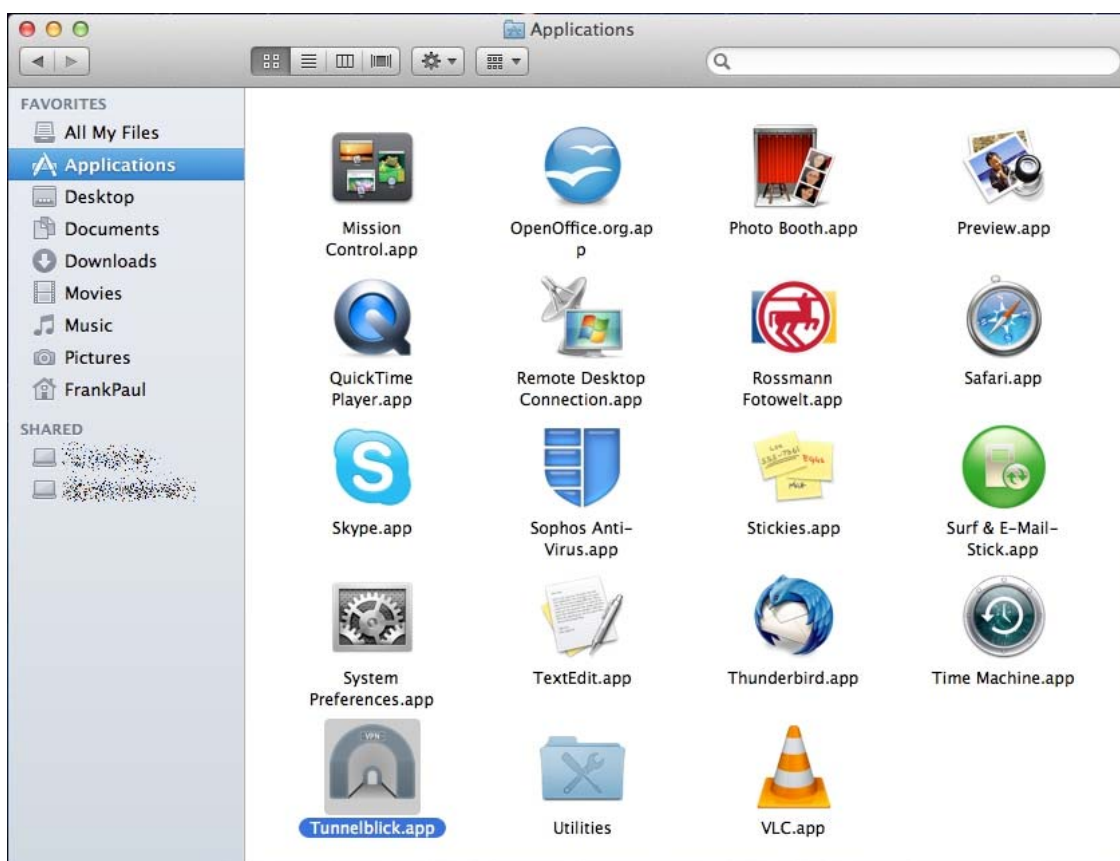
8. You are connected!

Hopefully everything went fine and you are connected know. The icon in the upper right corner changed its color.

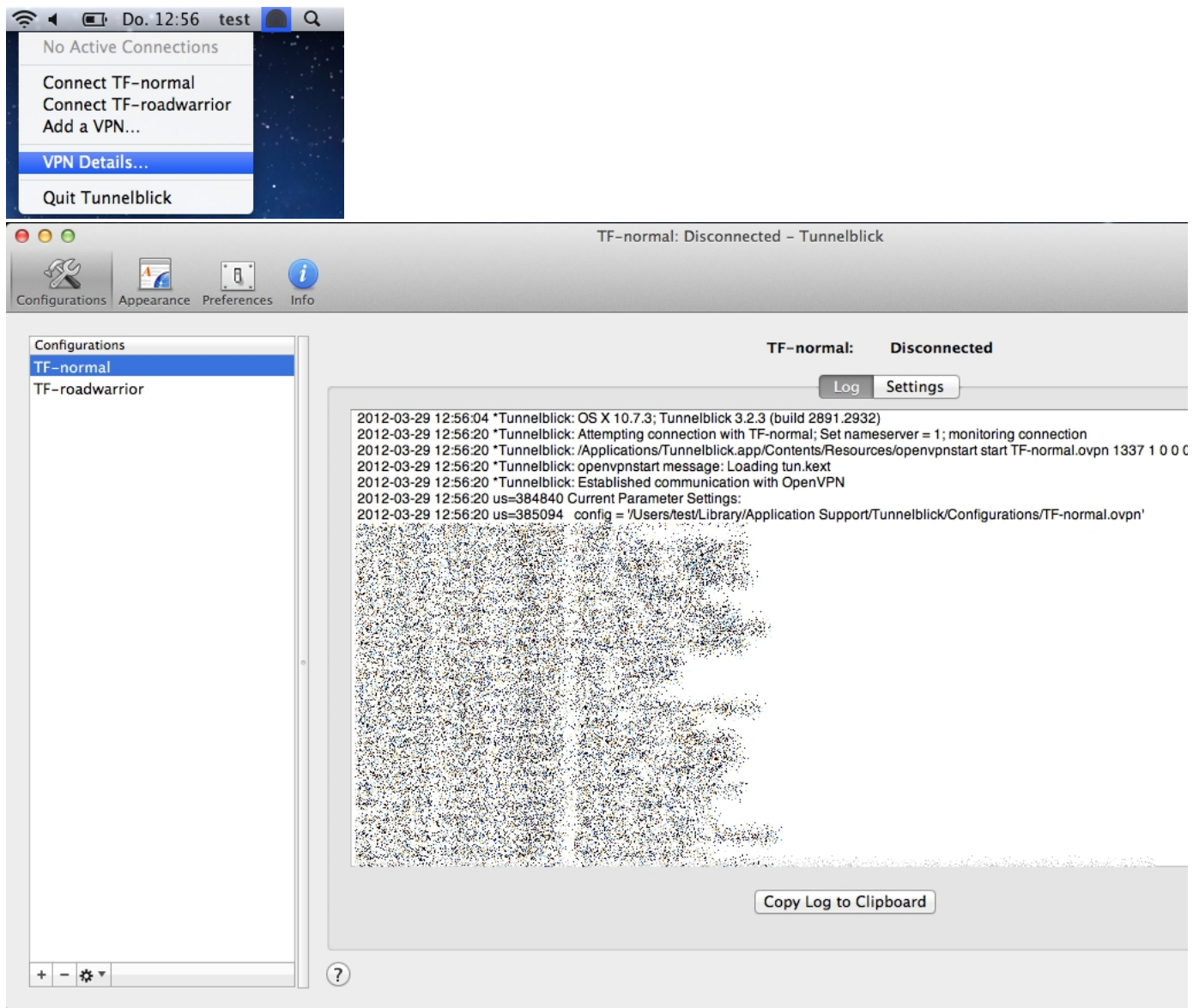


Some notes

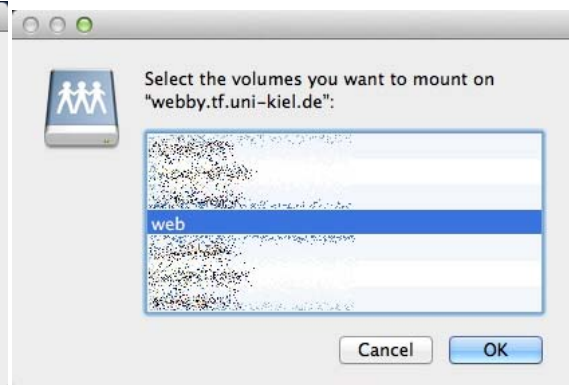
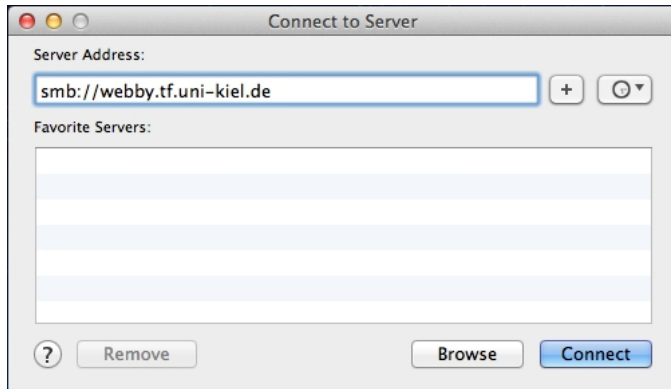
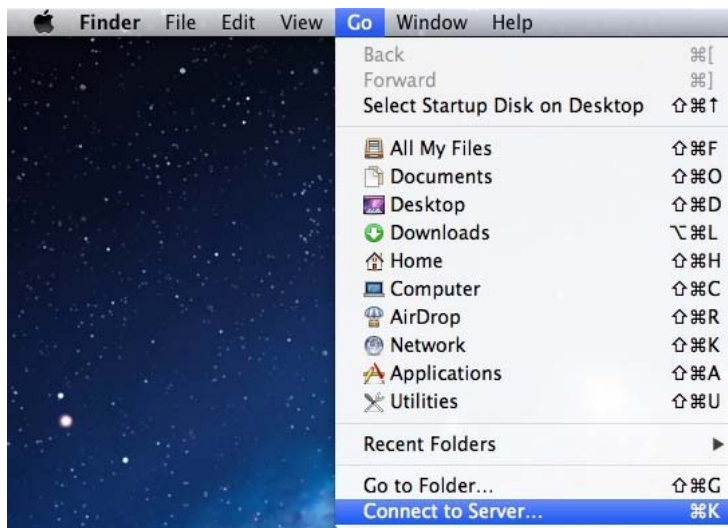
- Tunnelblick can be **executed** using *Finder, Applications*



- Logs** can be accessed through the Tunnelblick icon in the upper right corner, *VPN Details*.



- The **routing table** can be printed by opening a *Terminal* and entering *netstat -r*.
- You can access the **shares** of your workgroup-server by opening the "Go"-menu of Finder, selecting "Connect to server" and entering "*smb://workgroupserver:tf.uni-kiel.de*".



- If you want to connect to a **Windows Remote Desktop Server**, start the appr. program. The address of the server may be written like *"RemoteDesktopServerName.tf.uni-kiel.de"* .

