

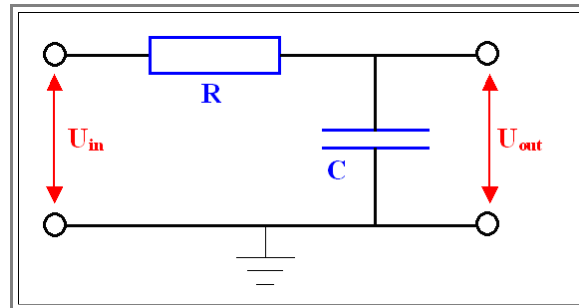
# RC Time Constant

## Basics

This will be a short statement of very elementary facts from basic physics or electrical engineering.

- Any "wire" used to carry electricity has a resistance  $R$  (we will not consider superconductors here) - just measure it via  $R = U/I$ . Its resistance measured in Ohms (O) might be small, but it is never zero.
- Any "wire" that serves its purpose is isolated from the environment by some dielectric (air or some insulation material) having some dielectric constant  $\epsilon_r$
- At some distance from any wire is always another conductor at some arbitrary potential. Even if our hypothetical device consist of a wire only, there is always the "earth" somewhere at (by definition) zero potential. It follows: Any wire has some capacitance  $C$  to something else. Again, this unintentional **parasitic capacity** might be small, but it is never zero. Moreover, whatever value it has, it is proportional to the dielectric constant  $\epsilon_r$  of the dielectric in question.

Any wire (at not too high frequencies) thus can be described by an equivalent circuit diagram that looks like this.



What happens if we put a digital signal on one end of the wire, which we call the "input" end? Ideally, that means that the voltage or better potential on the wire (the not grounded upper "wire" in the picture above) jumps from 0V to, say, 5V instantaneously. What happens at the output?

- Ideally, the potential would also go up suddenly after a certain time  $t_0$  which is dictated by the speed of light  $c$ , because nothing can move faster than that. we thus have  $t_0 = l/c$  with  $l$  = length of the wire, and  $c$  = speed of light "in" the wire, whatever that means.
- However, as soon as we raise the potential at the input, we have to put charge in the parasitic capacitor  $C$ . The voltage at this capacitor is the output voltage, and for a voltage  $U$  we need to have the charge  $Q = C \cdot U$  stored in the capacitor.
- For that a current has to flow into the capacitor, and that current will be restricted by the resistance  $R$ . Note that for just transmitting information as jumps in the potential, current flow would not really be necessary, but our parasitic capacitor needs charges flowing in (and later out) of it, if its potential is to change.

It is easy to describe quantitatively what happens. For the current  $I$  flowing during the charging of the capacitor we have two equations.

$$I = C \cdot \frac{dU_{out}}{dt} = \frac{U_{in} - U_{out}}{R}$$

- This is an easy differential equation. We will just look at the solutions for the two cases of  $U_{in}$  going "up" to  $U_{in-on}$  at  $t = 0$  and at  $U_{in}$  going "down from " to  $U_{in-on}$  to 0; again at  $t = 0$ .
- For the "going up" case we obtain

$$U_{out} = U_{in-on} \cdot \{1 - \exp(-t/RC)\}$$

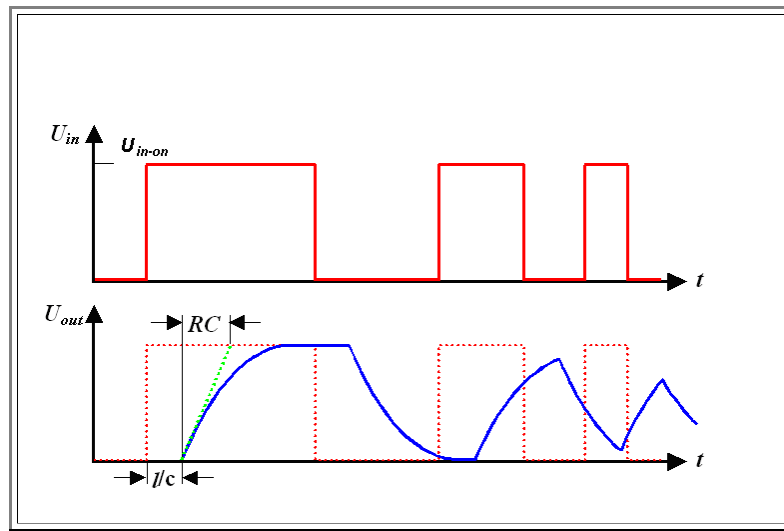
- This describes an output voltage that increases as a function of time with the **time constant**  $RC$ ; i.e. after the time  $RC$  the output voltage is  $U_{out} = U_{in-on} \cdot (1 - 1/e) = 0.63 \cdot U_{in}$ .

If we look at what happens if the input voltage is "going down", i.e. switched to zero (after it has been on long enough to make sure the output voltage is equal to the input voltage), we obtain in the same way:

$$U_{out} = U_{in-on} \cdot \exp(-t/RC)$$

- The output voltage thus decays with the time constant  $RC$  from the "on" value to zero.

Putting all of this together for some input signals gives the following picture:



What we have now is that at the output end of a "wire" with length  $l$ , the voltage will start to go up after a time  $t_0 = l/c$  with  $c$  = speed of light, i.e. the speed of electromagnetic wave propagation in the wire ( $c$  might not be exactly the speed of light in vacuum, but that is not the important part here).

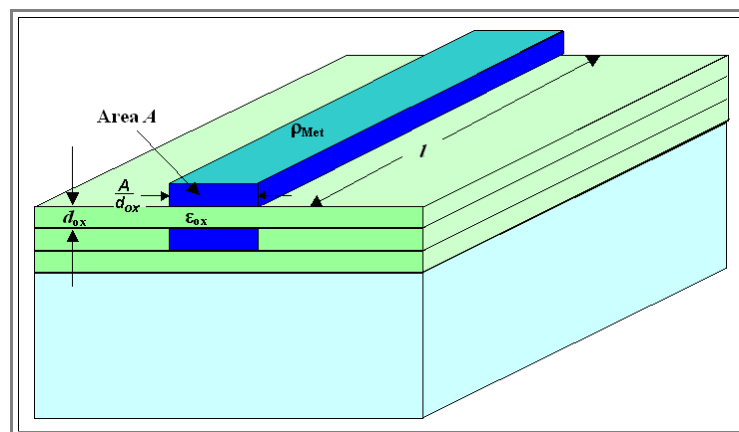
- The voltage then will start to increase, after the **time constant  $RC$**  it will be at about **2/3** of the input voltage. After a few time constant it is identical to the input voltage.
- If the input signal goes "down" again, the output signal will follow, again with a delay of  $t_0$  and then with a decay time again given by the time constant  $RC$ .

Now consider that we are discussing digital applications. The output voltage will be interpreted as either "0" or "1"; let's say the low potential = 0, the high potential = 1.

- During the transients of the voltage, we are neither here nor there, but our electronic circuitry typically will interpret a potential  $< U/2$  as 0,  $> U/2$  as 1. That simply means that the time it takes for a signal to travel through a wire with the length  $l$  and then to be recognized by what ever follows as a "1" is  $t_0$  plus about one time constant  $RC$  of the wire. That means we have an additional delay time given by the "undesirable" properties of the wire.
- Even worse! The picture makes clear, that as soon as you start to transmit signals shorter than a few time constant  $RC$ , your output signal can't even follow the input any more. In other words, at input frequencies much larger than about  $1/RC$ , you run into big problems.

In plain words: You cannot run your circuitry at frequencies  $> 1/RC$  - give or take a factor of 2 - 3.!

Where does that leave us? How large is  $RC$  typically for the "wires" in an integrated circuit. Let's look at a simplified situation:



Let's look at a typical **Al** or **Cu** conductor on a chip with a length of **1 cm**, a cross-sectional area of  **$0.5 \mu m^2$**  and the specific resistivity of **a typical metal of about  $2 \mu \Omega cm$** . The total resistance of our "wire" then is

$$R = \frac{\rho \cdot l}{A} = \frac{2 \cdot 10^{-6} \Omega cm^2}{0.5 \cdot 10^{-8} cm^2} = 400 \Omega$$

- The capacitor in the picture is formed by the two longish "plates", each with an area  $l \cdot w = l \cdot A/d_{ox}$  ( $w$  is the lateral extension of the conductor strip; i.e  $w = A/d_{ox}$ ). With typical numbers like  $d_{ox} = 300$  nm, dielectric constant  $\epsilon = 3.7$  (the value for **SiO<sub>2</sub>**), the capacity of the wires then is

$$C = \epsilon \epsilon_0 \frac{A \cdot l}{d^2_{\text{Ox}}} = \frac{3.7 \cdot 8.85 \cdot 10^{-12} \text{ A} \cdot \text{s} \cdot 0.5 \cdot 10^{-12} \text{ m}^2 \cdot 10^{-2} \text{ m}}{9 \cdot 10^4 \cdot 10^{-18} \text{ V} \cdot \text{m} \cdot \text{m}^2} = 1.82 \cdot 10^{-12} \frac{\text{A} \cdot \text{s}}{\text{V}} = 1.82 \text{ pF}$$

For our time constant **RC** we obtain

$$R \cdot C = 400 \cdot 1.82 \cdot 10^{-12} \frac{\text{A} \cdot \text{s} \cdot \text{V}}{\text{V} \cdot \text{A}} = 7.28 \cdot 10^{-10} \text{ s}$$

The maximal frequency we can transmit through this "wire " then would be  $\nu_{\text{max}} = 1/RC = 1.36 \text{ GHz}$ . This may appear a bit "handwaving" or just a rough estimation; nevertheless, the problem should be clear.

- On a real chip, signals travel through many wires; possibly far shorter then **1 cm**, and possibly not all the way atop another wire, so the capacity could be somewhat smaller. On the other hand, on a real chip, there are also neighboring wires to the left and the right, which increases the capacity.
- Nowadays, we always use a multilevel metalization scheme and being smart, we will keep the small wires on the lower levels quite short, and give the long wires (i.e. for power supply) on the upper levels a large cross-section - keeping **R** down in both cases. Nevertheless, a clock frequency of **4 GHz**, standard nowadays on many mass-produced microprocessors, is an amazing feat considering the number from above.
- Essentially, the specific resistivity  $\rho$  of the conductor and the dielectric constant  $\epsilon$  of the "**intermetal dielectric**" limit the maximal frequency of the chip after all tricks of an optimized geometry have been exhausted.

Decreasing  $\rho$  by a factor of about **1.6** by switching from **Al** to **Cu** started to make a lot of sense around the year **2000**.

- Replacing the ubiquitous **SiO<sub>2</sub>** with an  $\epsilon \approx 3.7$  by a so-called "**low k**" dielectric with an  $\epsilon$  of **1.5** or so would make a lot of sense right now (**2005**), unfortunately, nobody knows exactly how to do it (despite a Billion \$ or so, that have been spent on the search for a low-k material up to now).