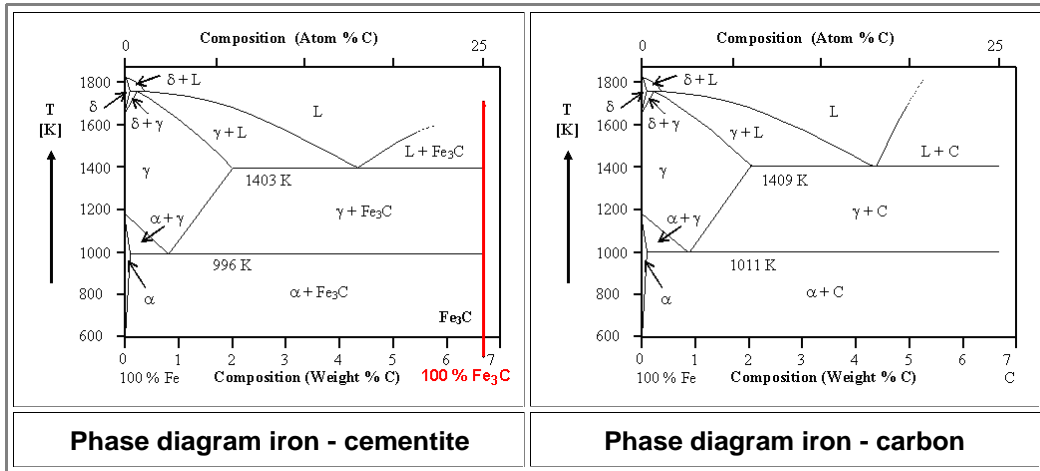


# Phase Diagrams of the Iron - Carbon System

Below, the phase diagram of **Fe - Fe<sub>3</sub>C**, as we already know it, is contrasted with the phase diagram of **Fe- C**

- Only the latter is a "true" phase diagram showing stable equilibrium phases. The former, however, is simply more important in a practical sense because it governs what we usually call "plain carbon steels".

Illustration



- As [stated in the text](#), the difference is rather small.