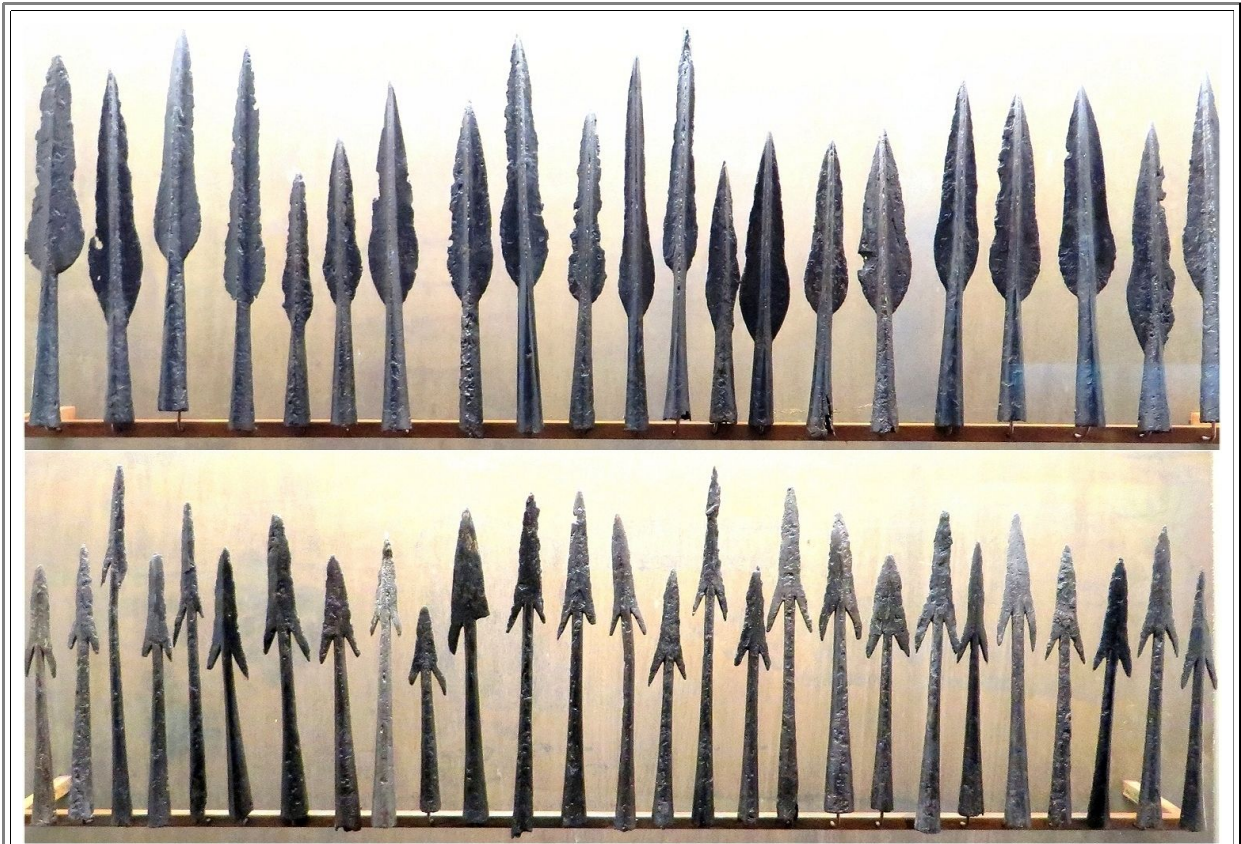


Large Pictures 2 Chapter 11.3

▀ Spear and lance points from [Nydam](#) in the Schleswig museum

Illustration






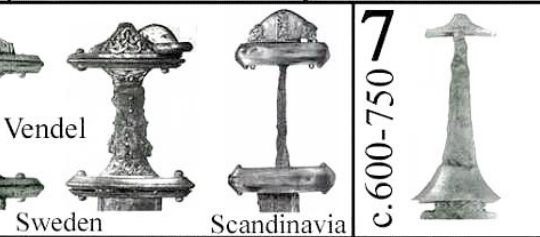


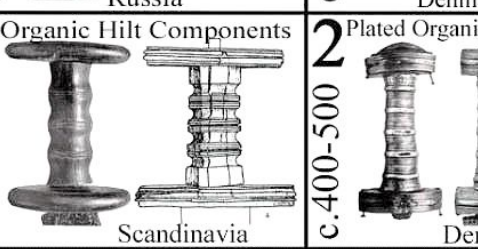
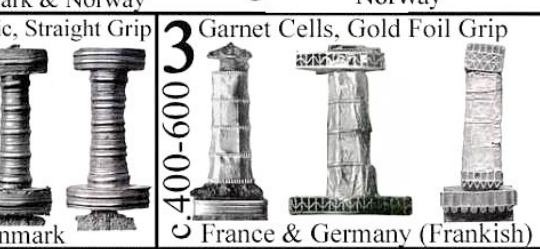
[Link to text](#)

Source: Photographed at the [Landesmuseum Schleswig](#)

▀ A quite good excerpt of the sword types as defined by [Elis Behmer](#)

Behmer Classification

from "Das Zweischneidige Schwert Der Germanischen Volkerwanderungszeit"
by Elis Behmer

<p>8 c. 650-750 Germany Sweden</p> 	<p>9 c. 700-800 Germany & Sweden</p> 
<p>6 c. 500-650 Britain & The Continent</p> 	<p>7 c. 600-750 Vendel Sweden Scandinavia</p> 
<p>4 c. 400-600 Garnet Cells, Stone Bead Pommel Russia</p> 	<p>5 c. 400-500 Plated Organic, Curved Grip - Solid Plate Guards, Central Lobe Pommel Denmark & Norway</p> <p>6 c. 500-600 Norway</p> 
<p>1 c. 350-450 Organic Hilt Components Scandinavia</p> 	<p>2 c. 400-500 Plated Organic, Straight Grip Denmark</p> <p>3 c. 400-600 Garnet Cells, Gold Foil Grip France & Germany (Frankish)</p> 

[Link to text](#) Source: Some Polish sword site; can't give details, sorry.

Overview of **Staffordshire hoard** pommels.



[Link to text](#) Source: By Medievalists.net – March 19, 2014

Some close-ups of the Staffordshire hoard pommels.



[Link to text](#)

Source: Internet at large (British museum, Birmingham museum, National Geographic, newspapers, ...)

A very nice Pyramid garnet pommel, displayed in the Stockholm Archaeological Museum. It is actually the "Hög Edsten" pommel mentioned in the [main text](#).



[Link to text](#)

Source: Photographed 2015 in the Stockhol museum

A very involved pommel with different designs on front and back. Seems to be gilded bronze and was found in Aldbrough; ca. 600 AD - 650 AD.



[Link to text](#)

Source: Sorry. Forgot

▀ A rather good pyramid garnet pommel coming up for sale at an auction in Jan 2018. So for just around 4.000 Euro you could own such a thing. Well, not quite. It was sold on Feb, 26th 2019 for £ 13.000.- (about \$ 17.000.-)

Timeline Auction Jan 2018

Merovingian Gold and Garnet Sword Hilt Fragment

6th century AD

A gold sword pommel and hilt comprising: tapering flat-section iron tang fragment, narrow scaphoid-section lower guard with two rows of billets and an arcade all executed in garnet cloisonné; two vertical rivets with domed ends and beaded wire collars; three-lobed pommel with beaded wire rims, geometric cloisonné design to each face and scale pattern to the narrow edge, four attachment pins with ribbed sleeves. 60 grams, 67mm wide (2 3/4"). Very fine condition. Rare.

Provenance

Property of a private collector, acquired before 1975.

LOT 0426

Estimate

GBP (£) 3,000 - 4,000

EUR (€) 3,360 - 4,480

USD (\$) 3,850 - 5,140

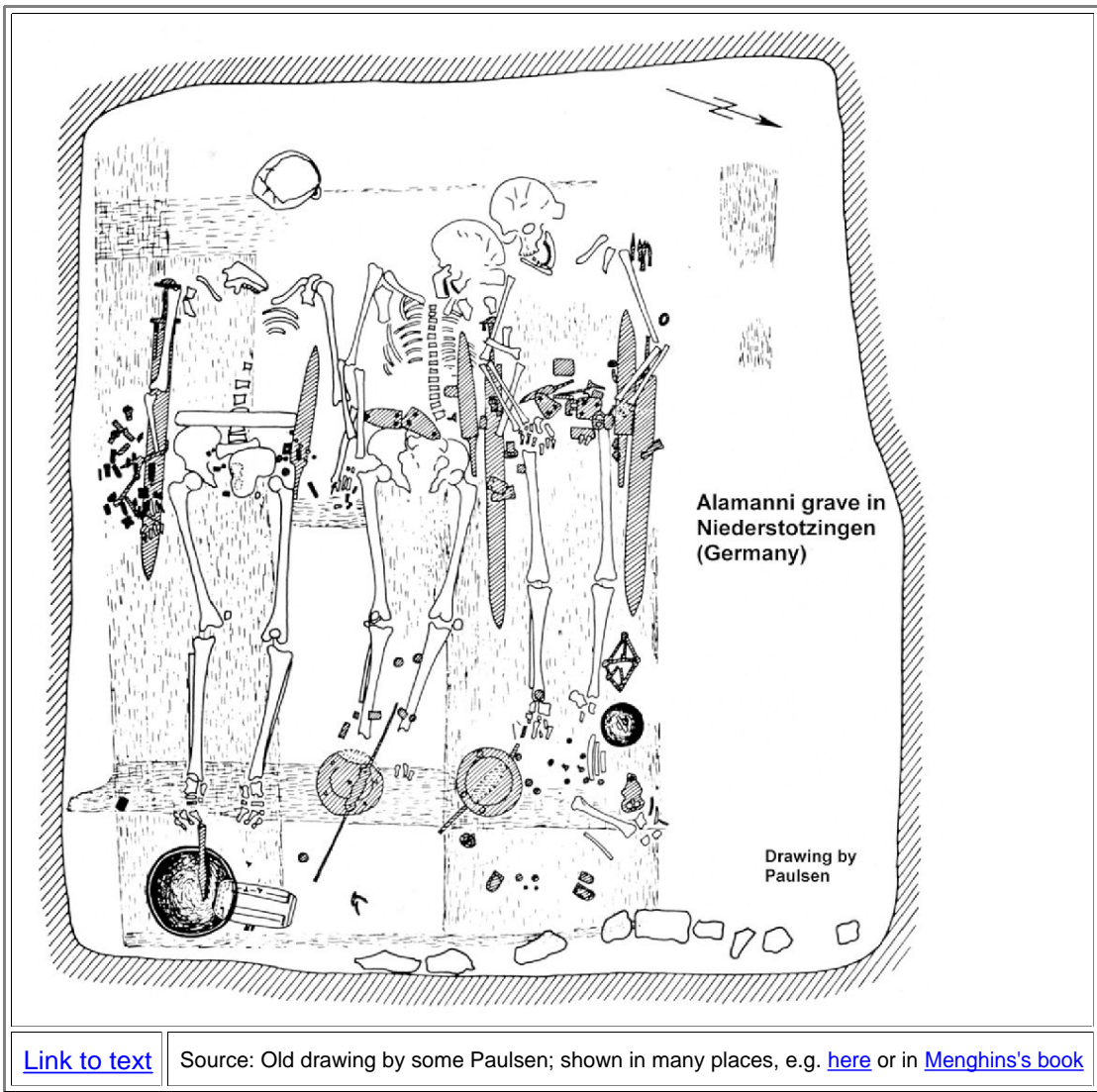
Bid History: 1 | Current bid: £2,250



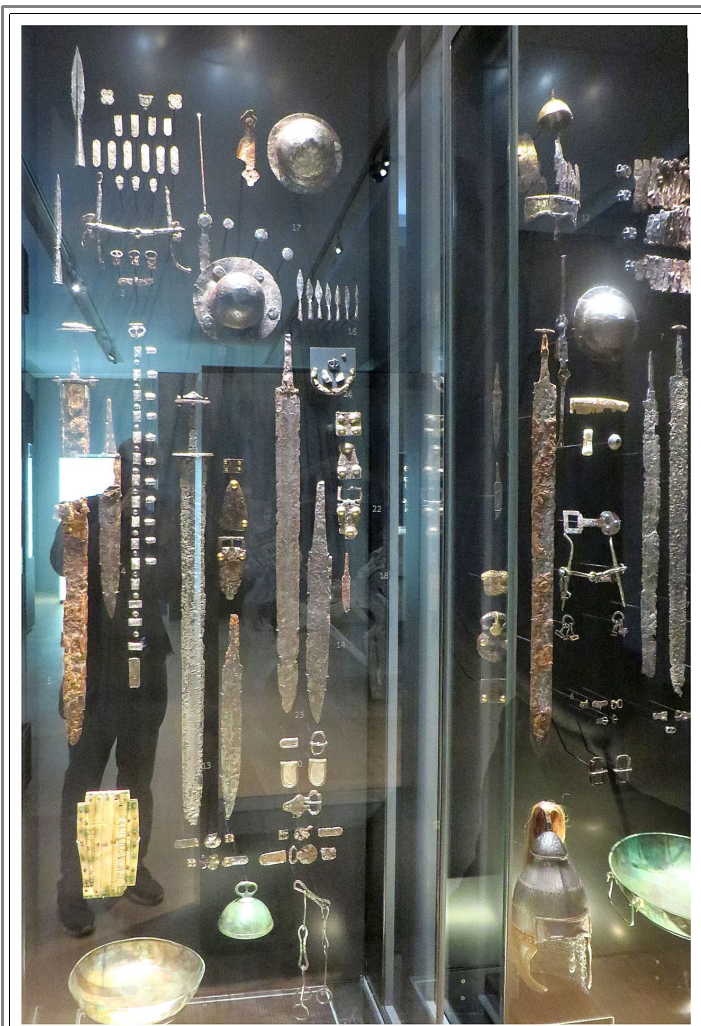
[Link to text](#)

Source: Timeline auction catalogue

- ▶ This is a drawing of a Niederstotzingen Alamanni grave where three people were buried. Each person was inhumated with a big sword, a sax, and many smaller items. And one of the persons was a woman!



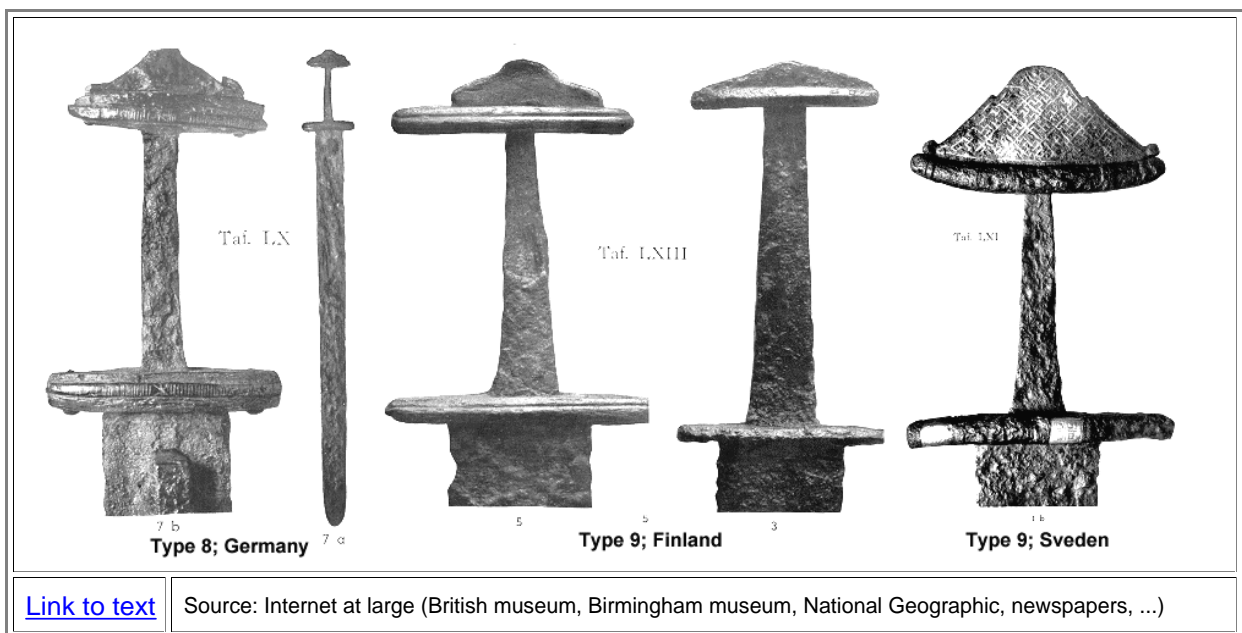
- In the next picture you can "see" the actual content of the graves as displayed in the [Württemberg State Museum](#), Stuttgart, Germany. What you actually can see quite clearly (in contrast tot the grave things) is that the museum has succumbed to the dreaded [Keep-things-in-the-dark disease](#), and you see mostly reflections.



[Link to text](#)

Source: Photographed in-situ Dec. 2017

Type 8 and 9 swords according to Behmer. From around 650 - 800. Behmer says almost nothing to the blades but they are most likely not pattern welded.



[Link to text](#)

Source: Internet at large (British museum, Birmingham museum, National Geographic, newspapers, ...)

▶ A pyramid pommel sword from some bog (probably [Nydam](#)).



[Link to text](#)

Source: Photographed in the [Copenhagen museum](#)

▶ This one is displayed in the National museum in Helsinki, Finland. Note that it is very similar to the Copenhagen one above.



[Link to text](#)

Source: Photographed in the Helsinki museum

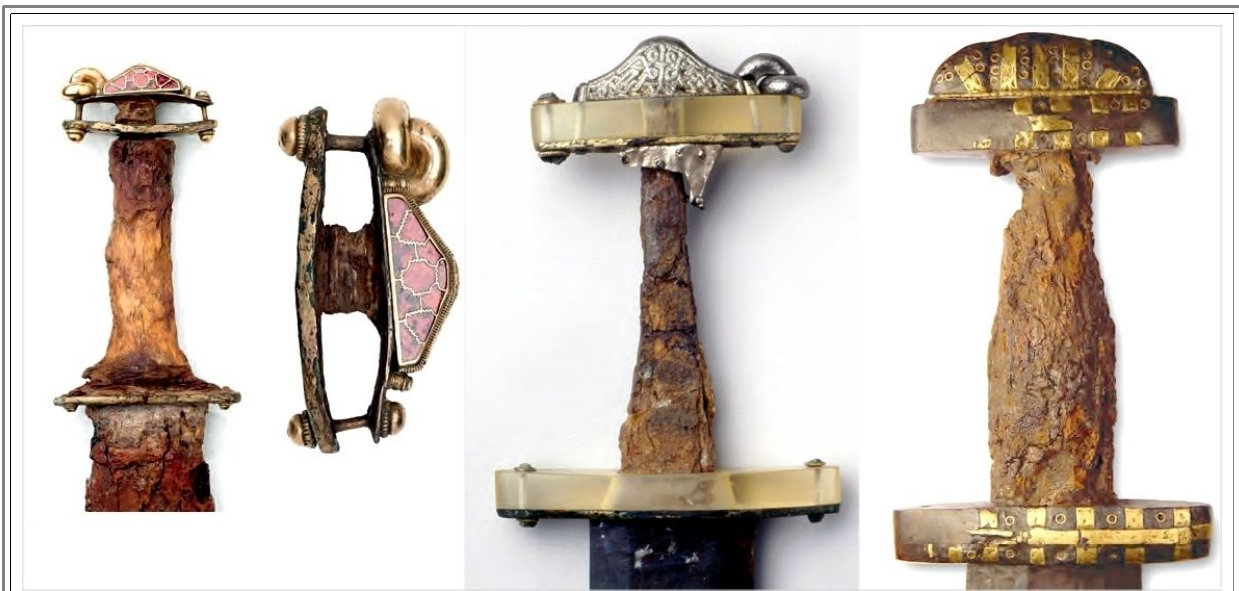
▶ This one is displayed in National museum in Rome, Italy. It was found in Grave 1 of the Necropolis of Nocera, Umbra. It appears that the ring has been added later



[Link to text](#)

Source: Rome museum

▶ You don't have to go very far from where I live to find fancy sword hilts including the [pommel ring](#) type. The following pictures were taken from the (500+ page) [PhD thesis](#) of **Ulrich Lehmann** who did a detailed study (involving fancy technology like X-ray tomography) of some swords from around the 7th / 8th century and found in Westphalia, North Germany



Left: Found around Krefeld; 520 - 530 AD.
Middle: Found around Beckum; 590 – 610 AD.
Right: : Found around Dorsten-Lembeck; 730 – 800 AD.

Source: [Lehmann thesis](#)

Some pictures from the large hoard of Roman iron from **Künzing**, Bavaria, Germany. The stuff was most likely buried after the Alemanni took the Roman fortress there in 259 AD.





[Link to text 1](#)

[Link to text 2](#)

[Link to text 3](#)

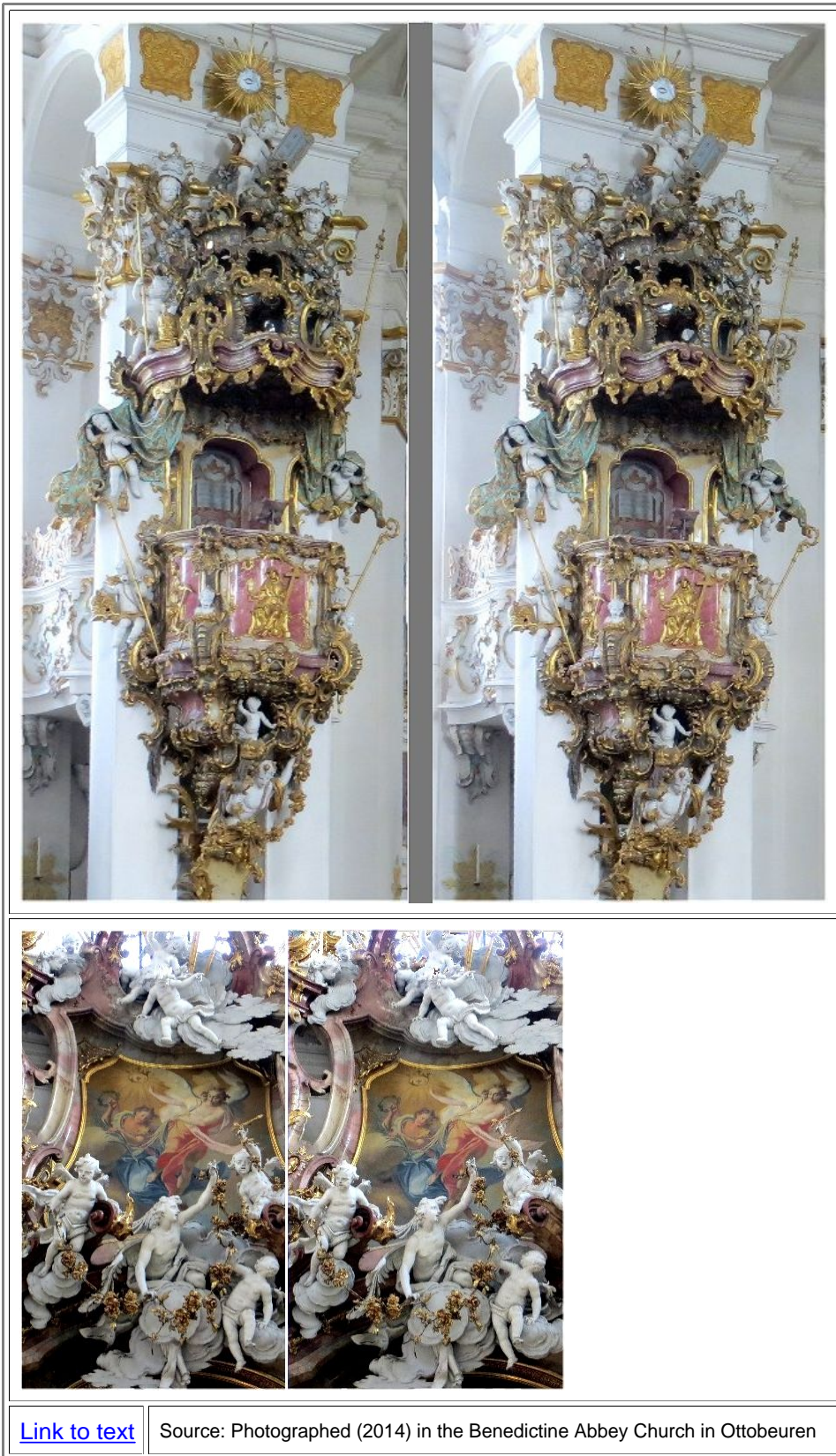
Source: Photographed (2014) in the Archäologischen Staatssammlung, München, Germany

Here a few of the [pugios](#) displayed in the Archäologische Staatssammlung, München, Germany.



Source: Photographed (2014) in the Archäologischen Staatssammlung, München, Germany

Here are stereo pictures of details in the famous Rococo Church in Ottobeuren, Germany.
Tip: If you can't see it three-dimensionally after some effort (moving your head a bit back and forth, left and right), print the picture (or transfer them to a picture processing program), cut out one part and move it around a bit while looking.
Start with the two pictures closer together.
If you see two pictures, move one part until both images coincide. The effect is rather spectacular.



[Link to text](#)

Source: Photographed (2014) in the Benedictine Abbey Church in Ottobeuren

- ▽ This sword is shown in the Mainfränkisches Museum, Würzburg, Germany. It was found in the Würzburg area and dates (presumably) to the 6th century if we go by the [Behmer classification](#). Note that its hilt has silver inlays ("Tauschierungen") and that the well preserved blade shows no obvious traces of pattern welding.
- Looking closely at the corroded parts of the tang (see the inset) reveals the all-telling striped bar structure and we may safely assume that the blade was pattern welded with one or two of the striped bars continuing into the tang region.



Details of the three [Alemanni swords from Memmingen](#). Have these blades been made by pattern welding?

- The left-hand side blade does not show obvious signs of pattern welding. The cracks indicated might denote the weld line of striped rods but that is not certain. Nevertheless I would bet that pattern welding was involved. The middle blade shows the telling-all herringbone pattern in its center and thus "classical" Alemanni pattern welding. The blade on the right-hand side shows tell-tale marks pattern welding marks only on the second look. Welding seams between rods can be found (marked by arrows), and even a faint trace of half a herring bone pattern can be discerned in some small part..



Here you find large pictures of the four gold-hilt spatha on display in the [Württemberg State Museum](#)

● The Entringen gold-hilt spatha:



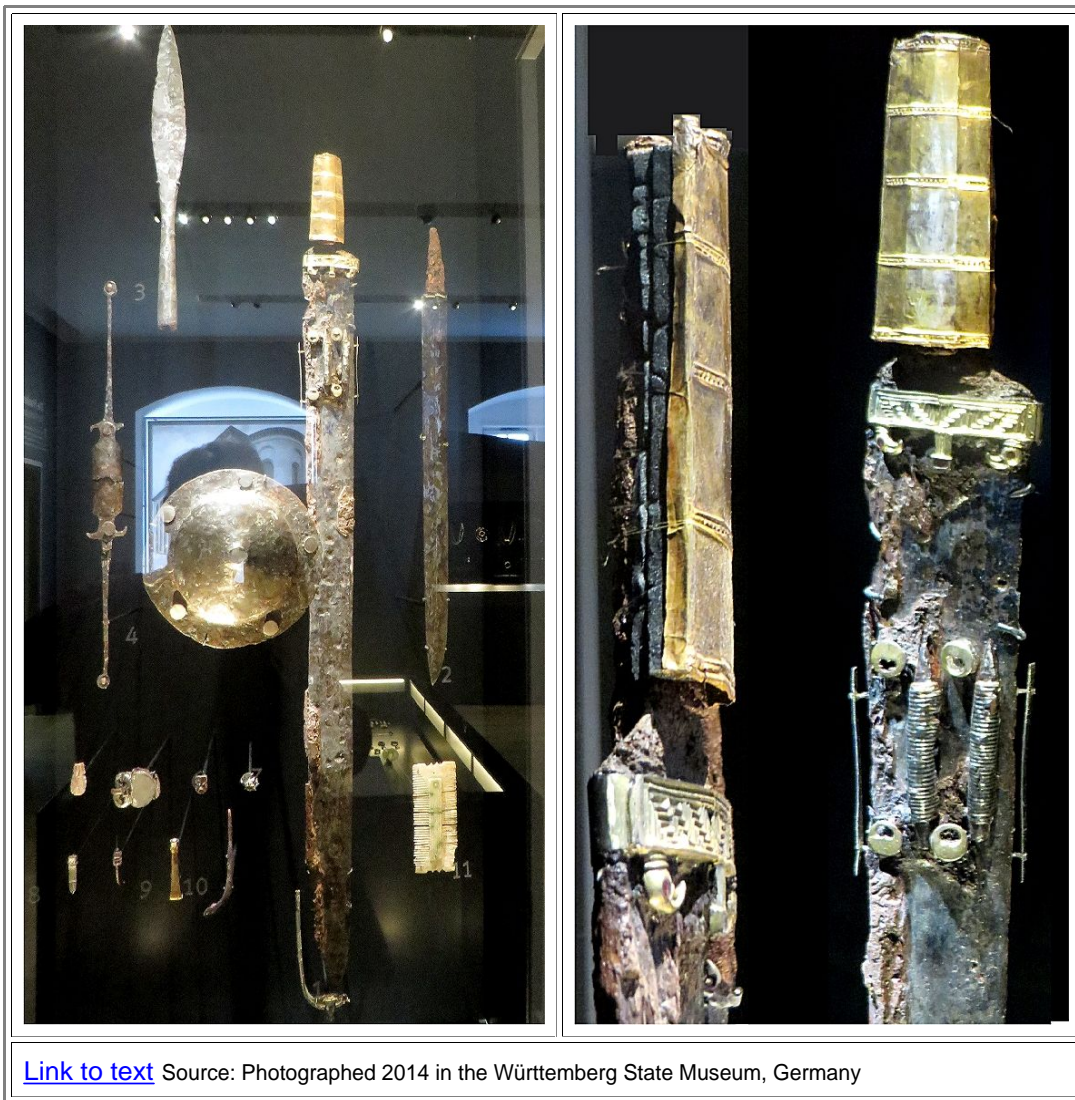
- The first Güttlingen gold-hilt spatha:



● The second Gültlingen gold-hilt spatha:



● The fourth gold-hilt spatha from Pleidelsheim:



- 1) **Ulrich Lehmann:** "Wurmbunte Klingen. Studien zu Konstruktion, Herstellung und Wertigkeit der frühmittelalterlichen Spatha in Westfalen"
Veröffentlichungen der Altertumskommission für westfalen Landschaftsverband Westfalen-Lippe Band 21;
herausgegeben von Aurelia Dickers.
Aschendorff Verlag 20176