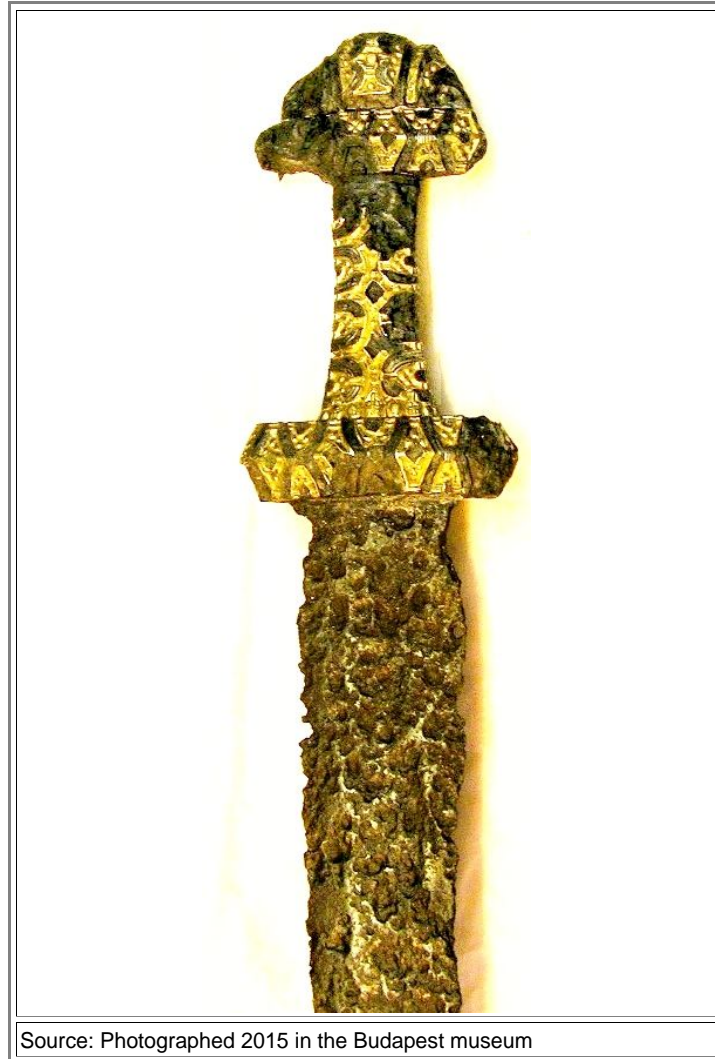


Additional Pictures [Chapter 3.3](#)

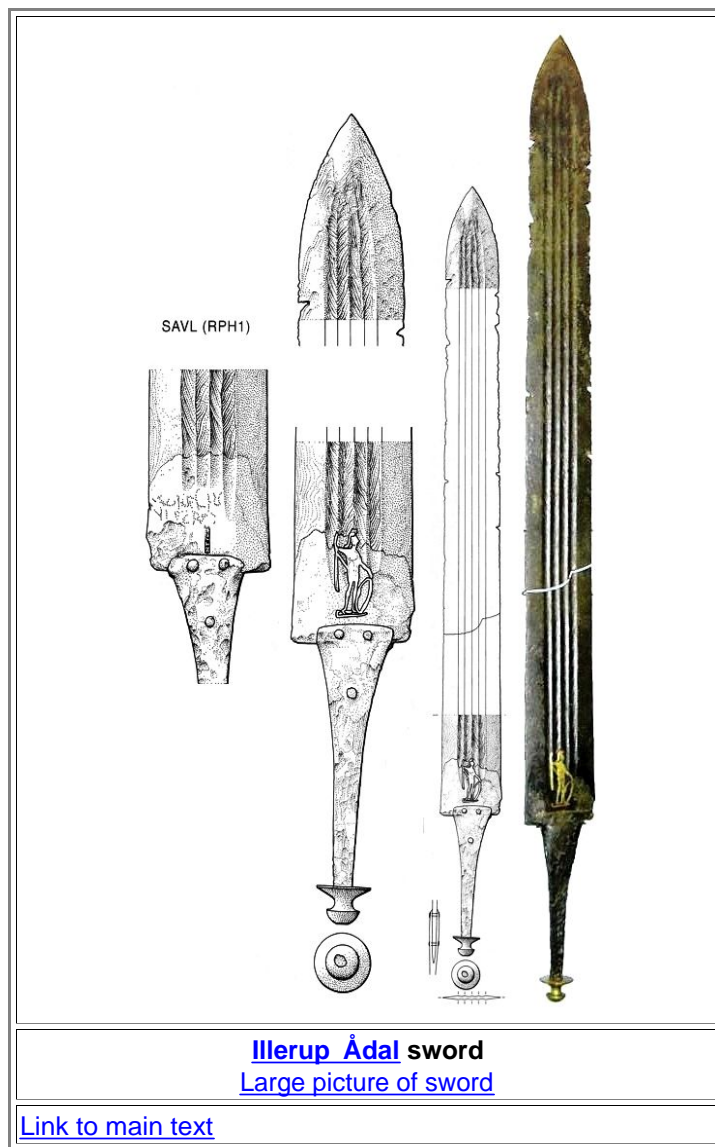
Illustration

Here is the original of the sword found in Turcianská Blatnica in Slovakia. The replica made by Patrick Barta is [here](#). Another picture can be found [here](#)

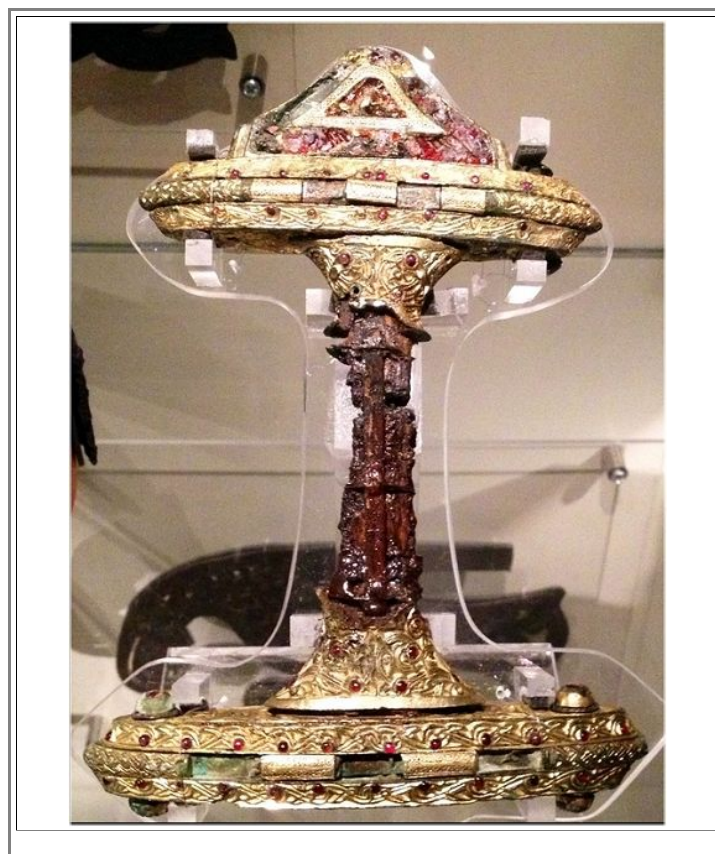


Source: Photographed 2015 in the Budapest museum

Here is an almost perfectly preserved sword from [Illerup Ådal](#) with a pattern welded blade and an [incrustation](#) depicting the war God Mars. The damage of the edges might be from fighting or from a ritual "killing" of the sword before it was sacrificed. The drawings are from the [Illerup Ådal book](#)



Here is another [Vendel period](#) pyramid hilt from Vålsgarde.



Source: Internet at large

[Link to main text](#)

Two more Vendel period pyramid hilts with pommel rings.



Source: Internet at large

[Link to main text](#)

Here is the **Munich pugio** with a pattern welded core as it is presently (2014) displayed:

- The pugio is part of a large hoard of Roman iron that was found 1962 in **Künzing**, Bavaria, Germany. The stuff was most likely buried after the Alemanni took the Roman fortress there in 259 AD. The winners probably looted the battlefield and the remains of the burnt-down fort and then buried part of the loot for reasons unknown. The 82 kg of iron objects are the largest find of Roman iron from the 3rd century that has been made so far. [Here](#) are some large-scale pictures of the hoard.

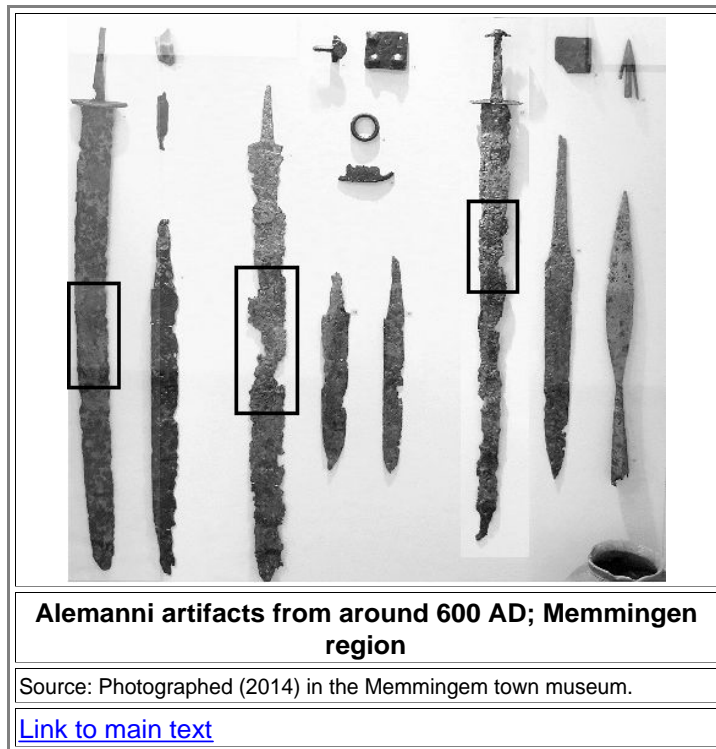


Munich pugio with pattern welded core

Source: Photographed (2014) in the Archäologischen Staatssammlung, München, Germany

[Link to main text](#)

Here are some - roughly - 600 AD swords, saxes and other stuff from Alemanni graves in the region of Memmingen, Germany.



It is not easy to tell for two of the three swords if they were made by pattern welding or not. [Here are large scale pictures](#) of parts of the blades (roughly indicates by the black squares above); judge for yourself.

Here are the pages from the auction catalogue of Hermann Historica in Munich, Germany, from Sept. 2015 that show pattern welded Celtic blades with two striped rods running down the length of the blade and quite remarkable [anthropoid hilts](#).

A detailed view of the first blade can be found [here](#).

Antiken

Artikel / Informationen

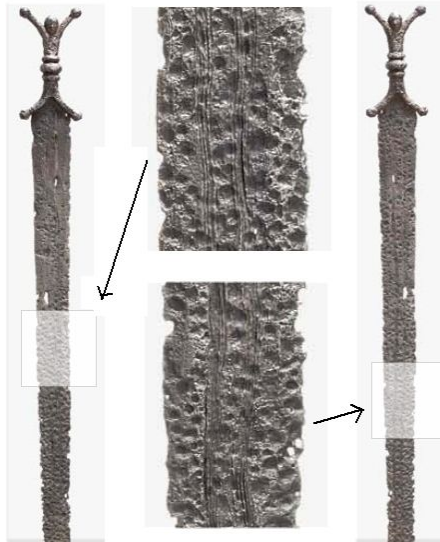
Kelten, Germanen und europäische Eisenzeit

Eisenschwert mit anthropomorphem Griff, keltisch, 3. Jhdt. v. Chr.
Damaszierte Klinge mit sich leicht zur Spitze hin verjüngenden Schneiden. Die Griffangel von einem schmiedeeisernen Griff mit stilisierter Menschengestalt eingefasst. Mittig mit drei Wülsten profiliert, oben und unten zwei Antennen mit kugelförmigen Enden, zwischen den oberen beidseitig menschliches Antlitz. Gute Eisensubstanz mit Gute Eisensubstanz mit dunkelgrauer Oberfläche. Kleinere Scharten Kleinere Scharten entlang der Schneiden. Fachmännisch elektrolytisch | behandelt und restauriert. Länge 82,3 cm.

Süddeutsche Privatsammlung, erworben in den 1980er Jahren im Kunsthandel.

Zustand: II - III

Limit: 2500 EURO



Celtic blade from 300 BC with two striped rods, not unlike [this one](#) with four striped rods from about 300 AD.



**Second sword; the description is similar to the first one.
Pattern welding is not as obvious but present.**

Source: Hermann Historica on-line auction catalogue 2015