

Development Luristan Finials
Tube Men





Met



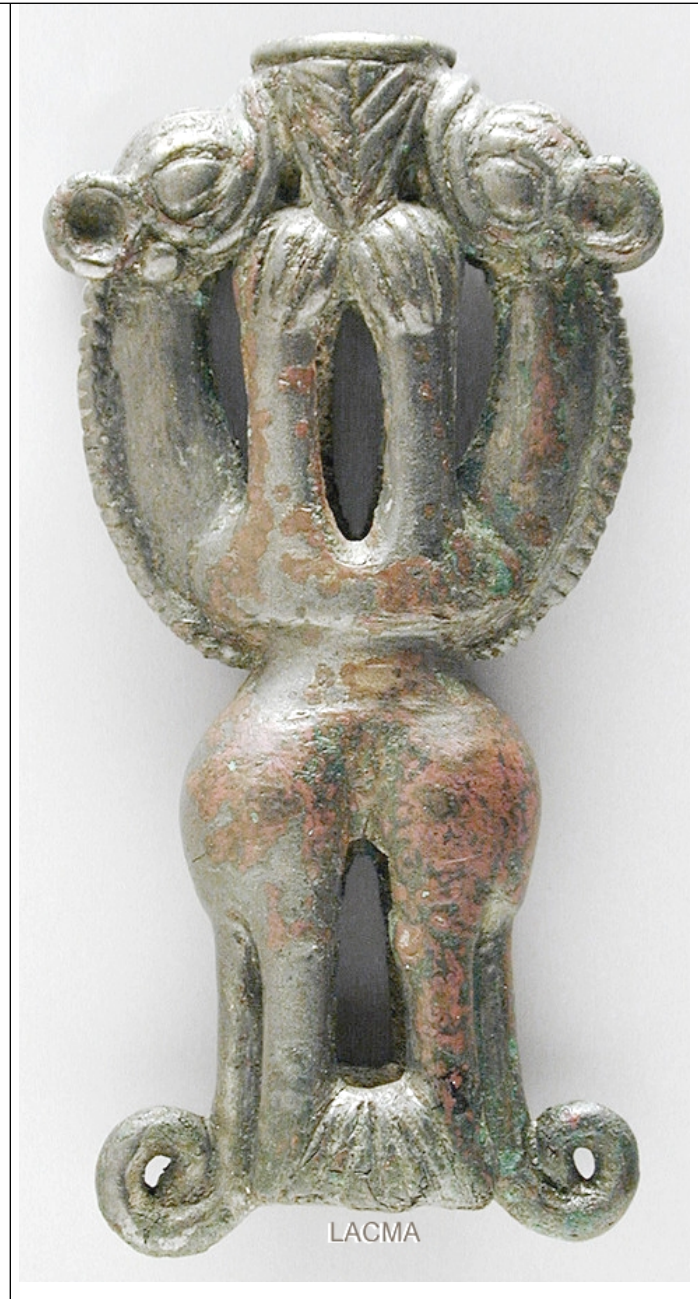
Arch. Staatssammlung Munich

“Animals Only” Finials





LACMA



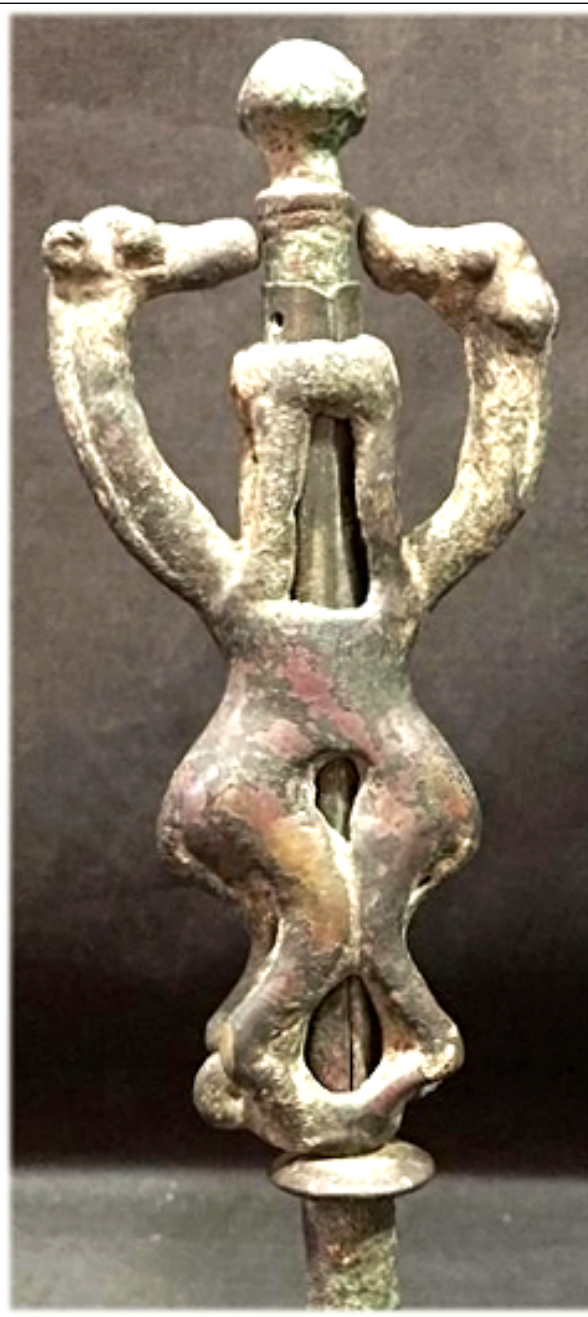
LACMA



Arch. Staatssammlung Munich



LACMA



The animals above are the “beasts”. The first few are modeled after some predatory cats with exaggerated teeth and a long tail. The last few look a bit more peaceful; partially because their mouth is closed.



The “ibex” group starts here. Pronounced are the horns, a beard, and often genitals.
Some have a long (and often twisted) tail. A real ibex has only a short little stub there.

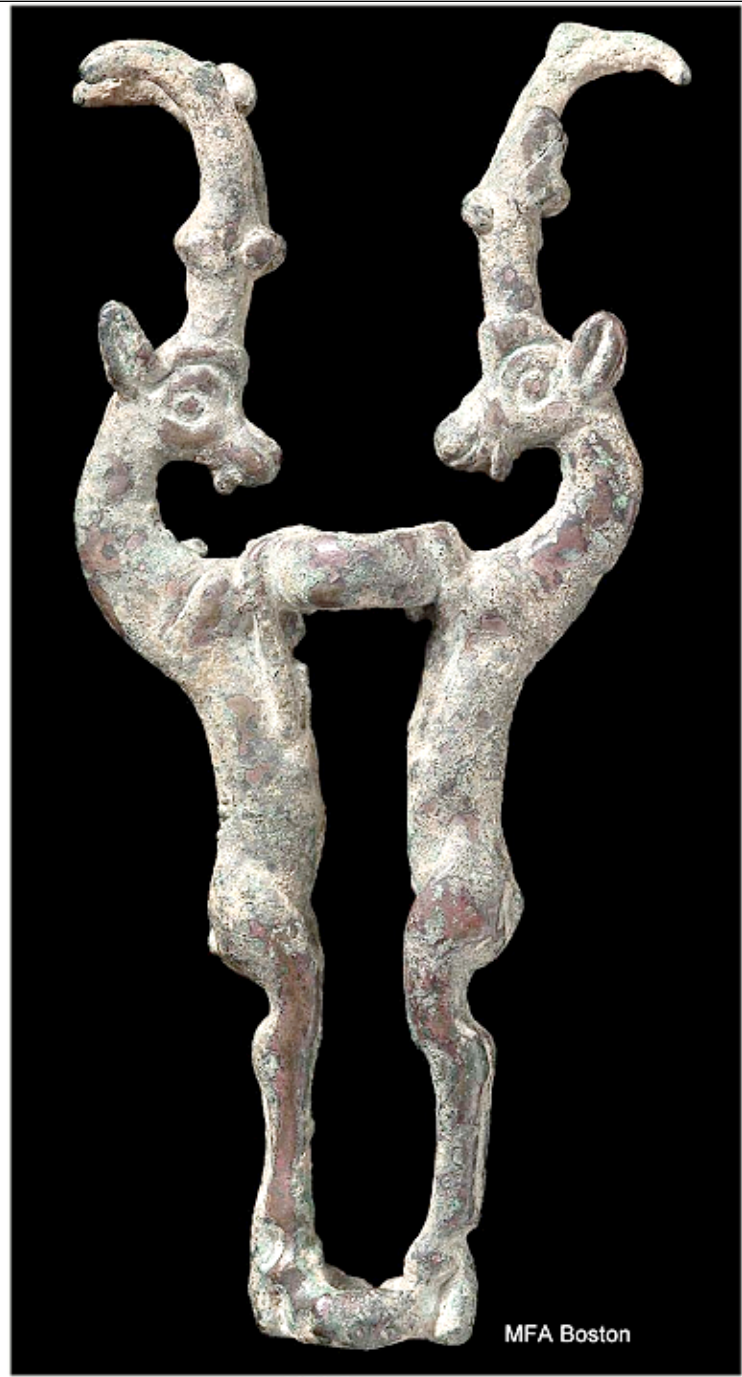




MFA Boston



MFA Boston





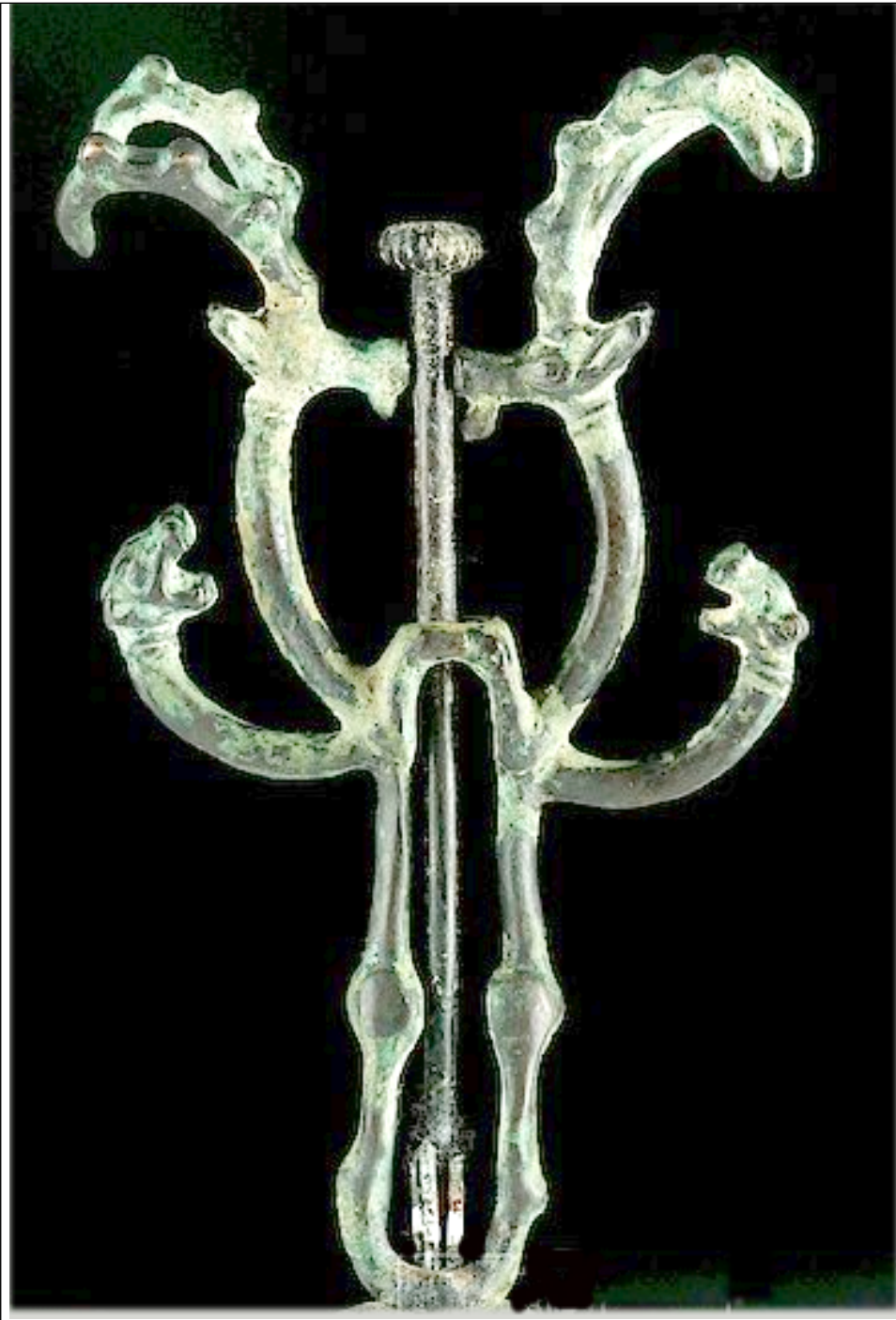
Christoph
Bacher



Royal
Athena

Galery







This beauty came up in an online auction in Sept 2025. It was not sold and is now for sale for 2700 Pounds. (plus fees=.

WESTERN ASIATIC BRONZE FINIAL WITH ANIMALS
1200-800 B.C.

14 1/8 in. (860 grams total, 36 cm including stand).

A bifacial sceptre head formed as a collared tubular stem with bulb foot; above, two opposed ibexes with segmented horns and coiled beards each attacked from behind by a mountain lion with gaping jaws, slender body and ropework tail; mounted on a custom-made stand.

PROVENANCE:

with Manouchehr Soleiman Aaron, Tehran, 1967.

Brought to the U.S. prior to 1974.

American private collection.

with Christie's, New York, 7 December 2011, no.16.

European private collection.

This lot has been checked against the Interpol Database of stolen works of art and is accompanied by a search certificate number no.12873-241699.

This lot has been cleared against the Art Loss Register database, and is accompanied by an illustrated lot declaration signed by the Head of the Antiquities Department, Dr Raffaele D'Amato.

LITERATURE:

Cf. Chausidis, N., Luristan Standards, iconography semiotics and purpose, Skopje, 2022, p.50, nos.4-5, for similar.



MFA Boston

Now for the weirder ones:

Here are two harness rings (there are many more in that style) and not finials that show an ibex plus the “beasts”. The beasts do not look all that menacing. In the second example they have “leopard” spots and the typical, if very abstract head. Their feet are far too large and with exaggerated claws or toes.

The second ring also sports two very typical heads. They are heart-shaped and have horns, something not often found on the finials



Met

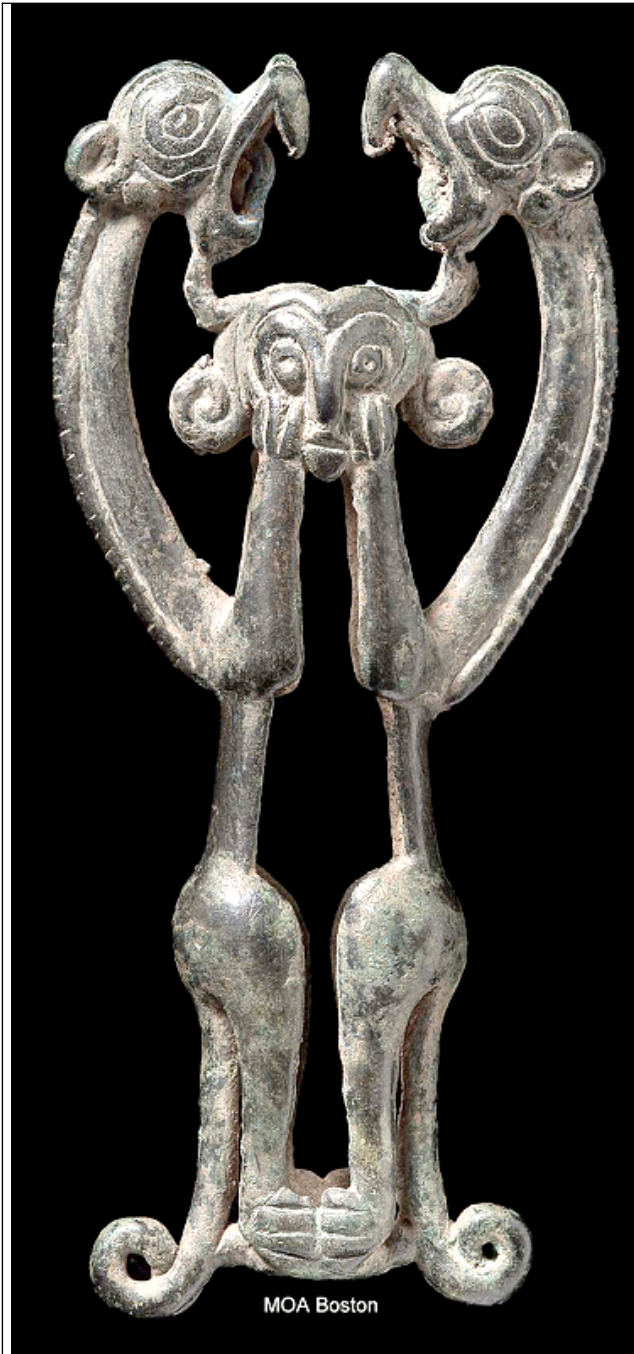
Note the now fully stylized head of the beasts



Some of the old Luristani artists might have enjoyed a little joke now and then. Here we have two Ibex with human heads and of opposite sex who are about to embark on some activity that is usually not all that violent. It might be a fake, but the Metropolitan museum, we hope, does check its possessions.

Victim of Animals







Christies



Birmingham



ebay



Walters Art | Baltimore



Birmingham



Penn Museum



Birmingham



Birmingham



Arch. Staats-
sammlung Munich



Arch. Staats-
sammlung Munich



Arch. Staats-
sammlung Munich



LACMA



LACMA



British Museum



Penn museum



Met Museum



MFA Boston



Arch. Staats-
sammlung Munich



LACMA



MFA Boston



Above and in this needle we have ibexes instead of the beast doing – well, what are they doing? Biting his neck or ears?

Not that in the last two one the figure sports horns instead of the typical pot-like crown or hairdo.



LACMA

Some kind of transitory state. The figure now has a complete body with arms and legs. It is still held by the beast and they are nibbling at his ears, i.e. eating him. He does not look masterful but is in pain.

Soon he is going to use his arms to check the beasts.



Bacher

Front and back, Note the two sets of arms – form the beast and from the figure.