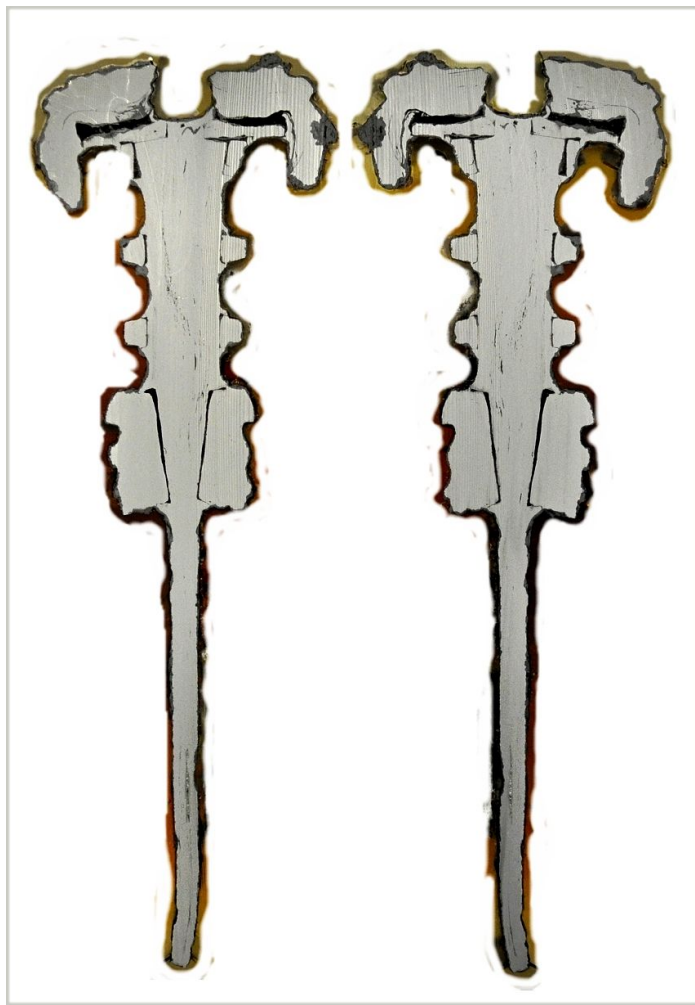


## Luristan Project - Large Pictures

We start with a picture taking right after cutting the sword:

Illustration

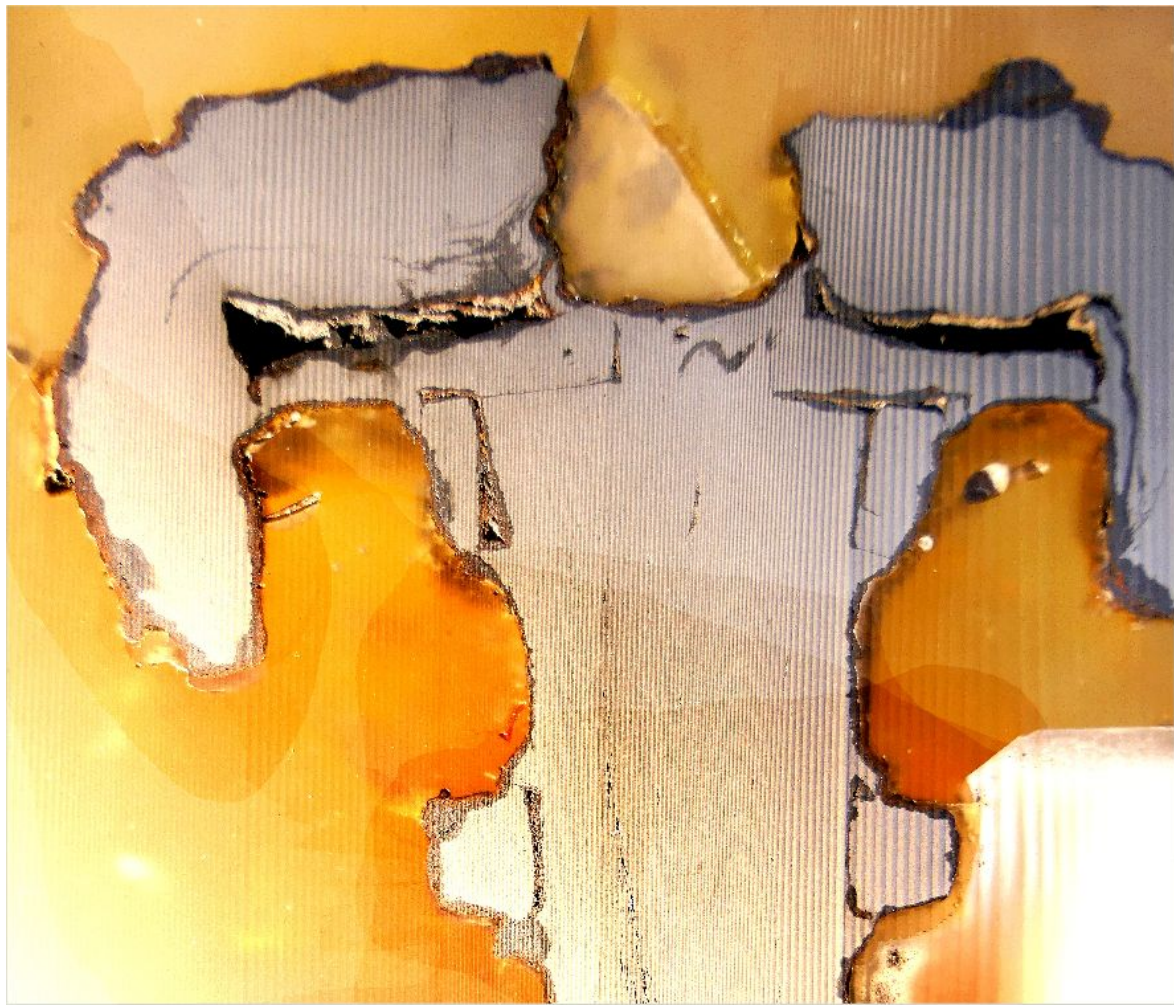


You see how the sword was constructed. You also see the supreme workmanship for the visible parts and the sloppy workmanship in the invisible regions. You also see a lot of very large (because they are visible) inclusions in the iron.

The parallel "lines" reflect a certain waviness of the cut and are not features of the sword

Source: Luristan project; see [link to text](#)

Same thing once more, just at higher magnification for parts of the sword. You can see the details of the construction.



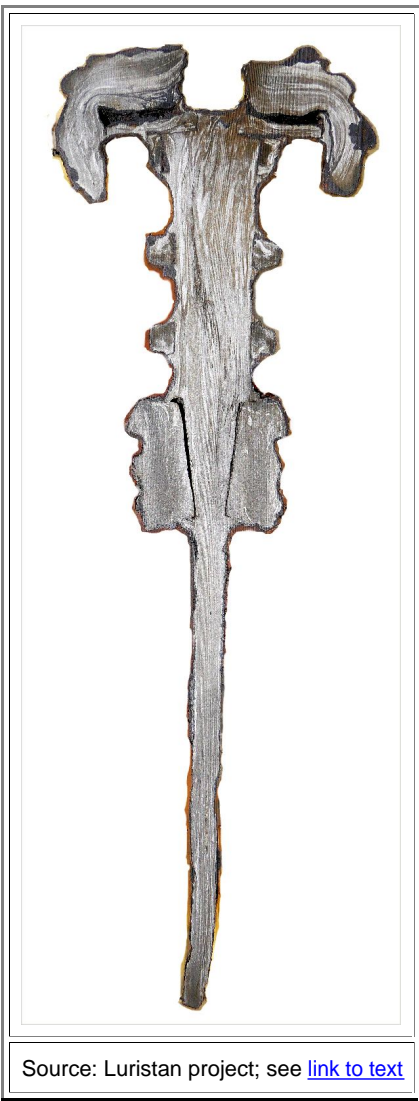
Source: Luristan project; see [link to text](#)

Now to the Nital etching on the as-cut surface, The first picture is of middle size, the next one is huge.

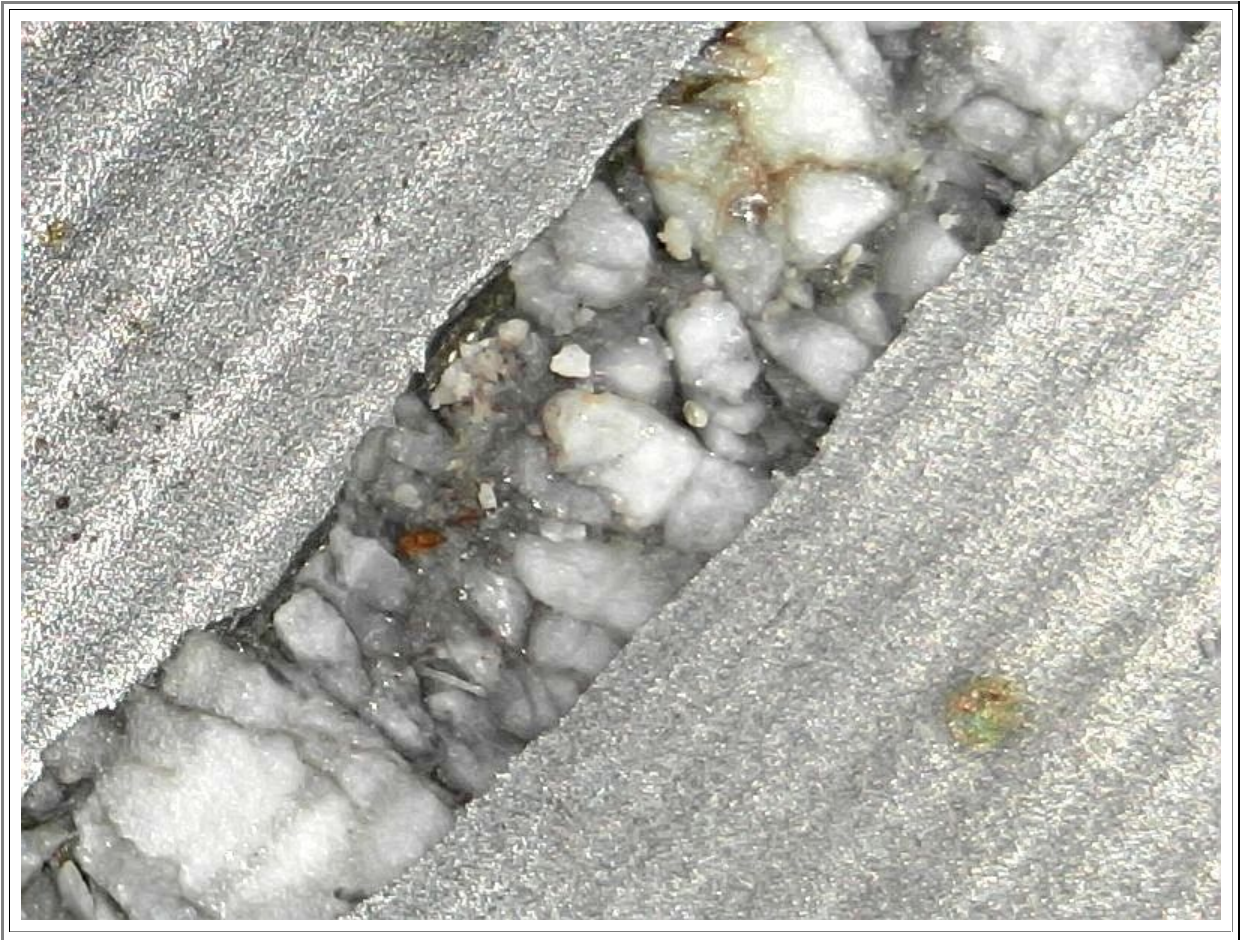


Note the curving of the white striation structure, e.g. in the right head.

Source: Luristan project; see [link to text](#)



Here is what you find in the large defect zone of the hilt. Probably fayalite crystals - but this is only a guess.



Source: Luristan project; see [link to text](#)