

Large Pictures V

From the [Israel Museum](#) in Jerusalem . All pictures were taken in Nov. 2017 by H. Föll

The first set of large scale pictures shows objects from the **Nahal Mishmar Hoard**.
Texts can be found in the [backbone](#) an in the module "[Israel Museum](#)".

- First the possibly most enigmatic objects: Hippopotamus ivory with an array of holes that were drilled quite nicely. What that is good for, nobody seems to know.

Illustration



Next we have the famous "crown". Except that it is rather a model of some enclosure, experts think. Acepters, standards or mace heads follow - make your choice. They were the most numerous objects, it appears.





Here is a standard or whatever made from As / Sb bronze, note the silvery sheen.



The following picture shows weird stuff, more or less:



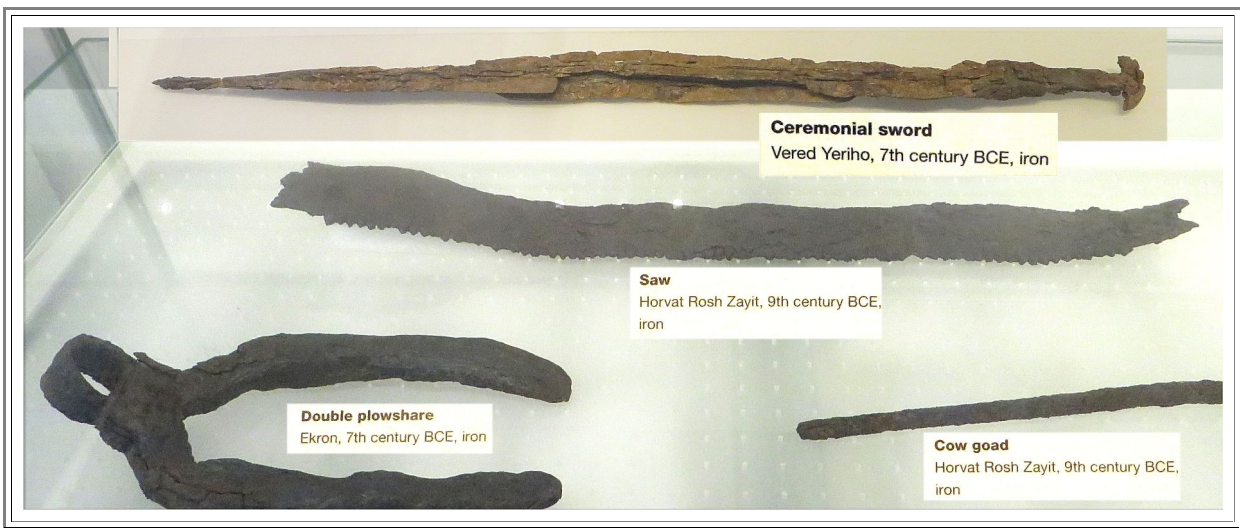
The next set of pictures shows other objects of interest from the [Israel museum](#) in large size.
First the "usual" bronze objects:



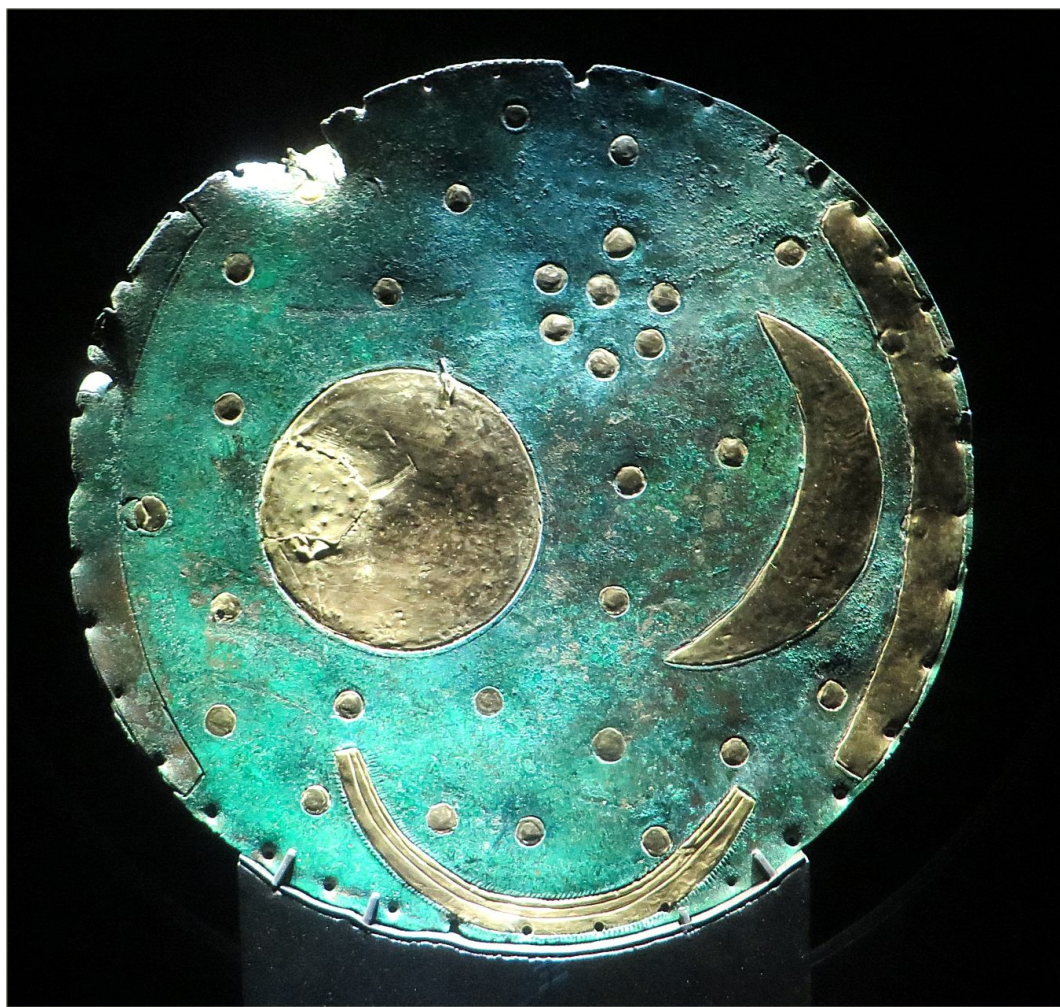
Considering that Palestine was under Egyptian rule for quite some time in antiquity, it should come as no surprise that typical Egyptian Kopeshes were found (called "scimitars" by the museum),



Here we have tantalizing iron objects. They belong to the oldest big objects from the 9th century BC and before that I have seen so far.



In what follows you find a few large-scale pictures of objects in the ["Landesmuseum für Vorgeschichte" \(Halle, Germany\)](#).
First the famous **Nebra sky disc** and the **Nebra swords**.



The famous Nebra sky disc

[Link to text](#)

Source: Photographed in the Museum in April. 2018

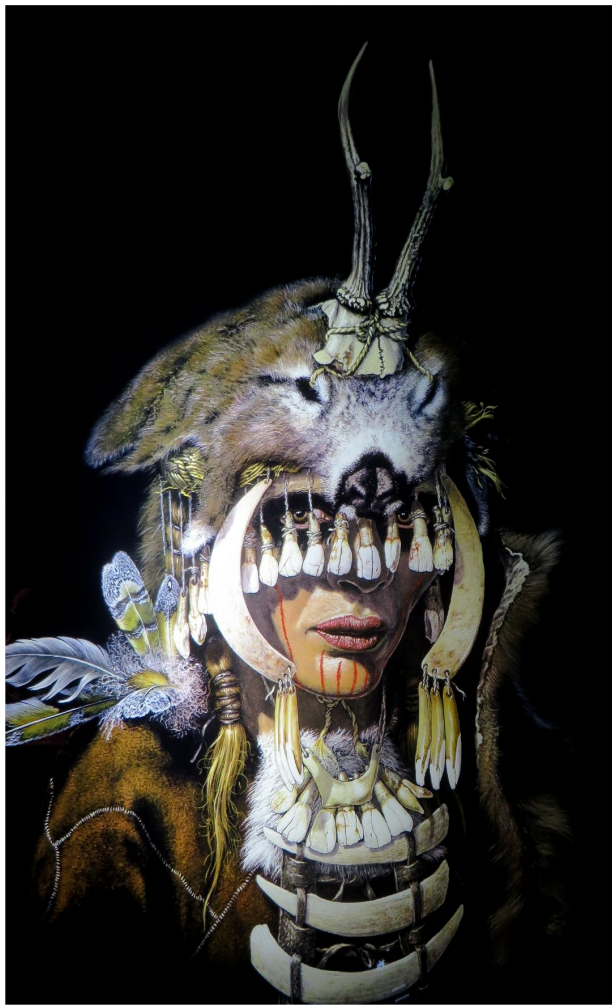


The Nebra bronze swords

[Link to text](#)

Source: Photographed in the Museum in April. 2018

▀ The Landesmuseum is one of the few museums left that kept some of their old-fashioned (and often slightly corny) pictures that are supposed to show you what things might have looked like. They are marvellous and really tickle the imagination (in several directions). Here is one of an early (6000 BC) female shaman:



**Woman from Bad Dürrenberg. (7000 - 6.600 BC);
artists conception**

Source: Photographed in the Museum in April. 2018

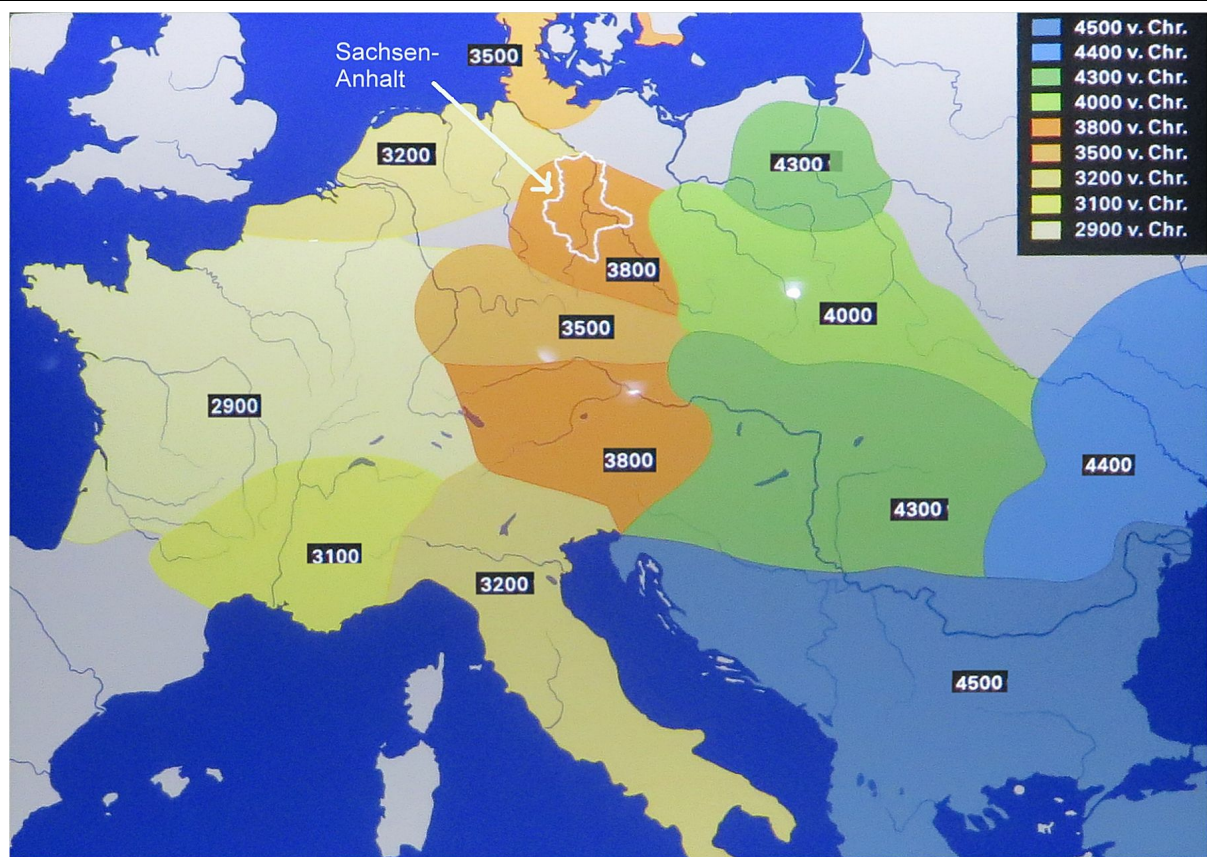
[Link to text](#)



Stone tools. A lot of them

Source: Photographed in the Museum in April. 2018

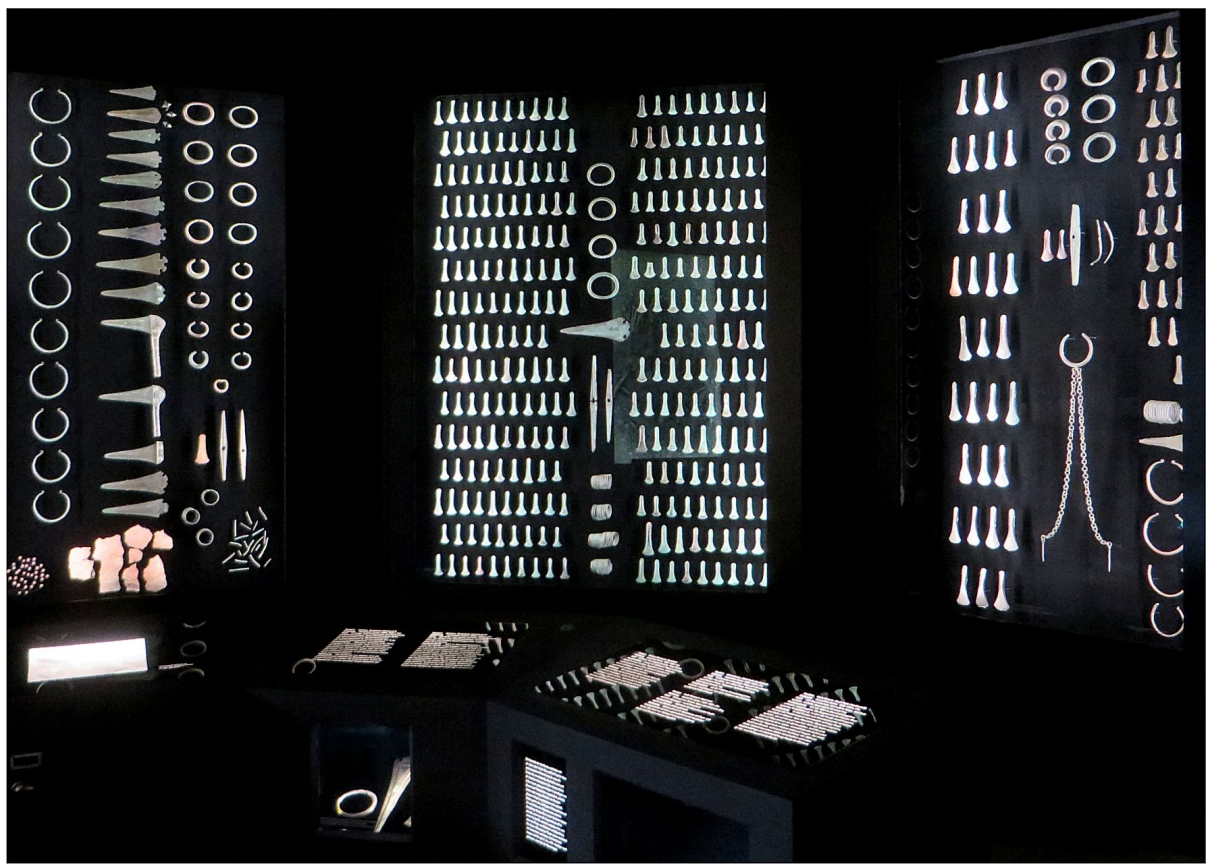
[Link to text](#)



How copper technology spread

Source: Photographed in the Museum in April. 2018

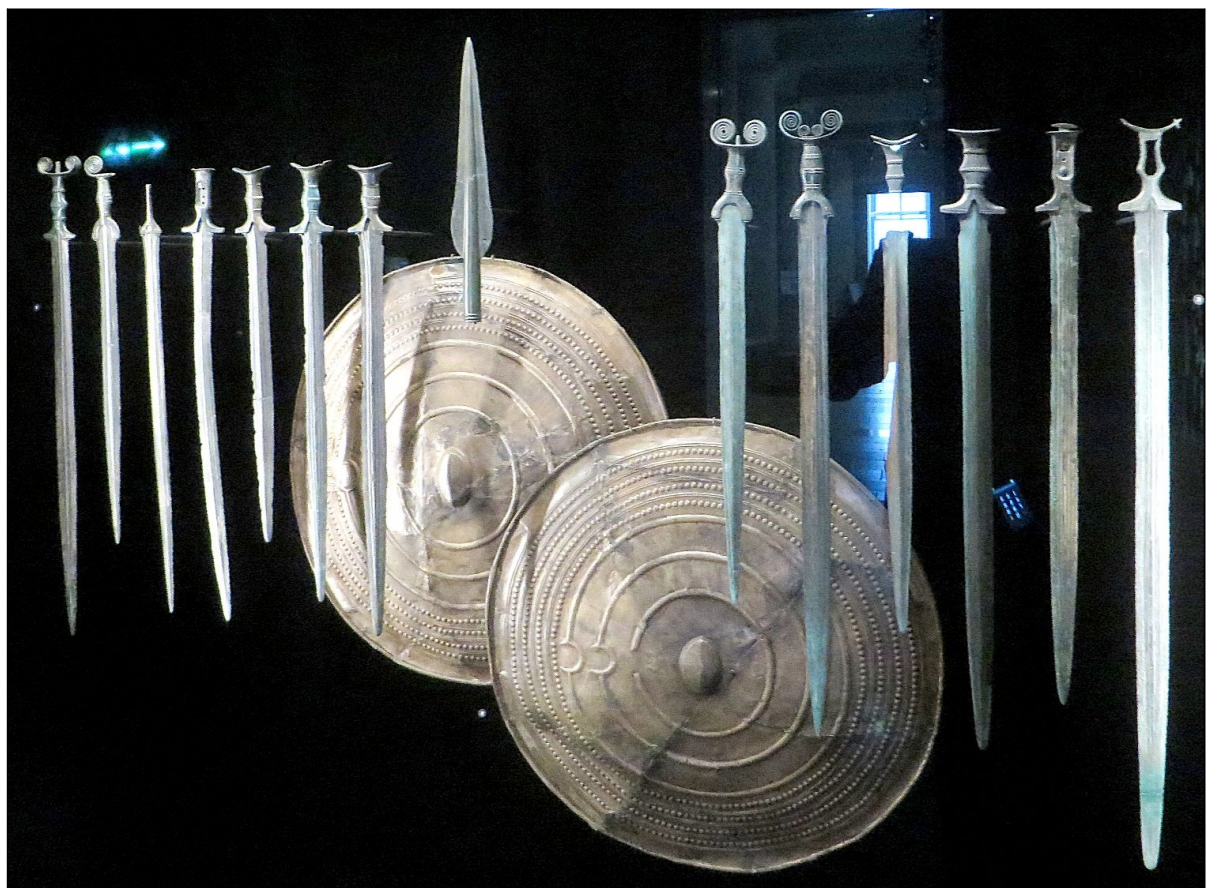
[Link to text](#)



Bronze objects from around 2.000 - 1.600 BC

Source: Photographed in the Museum in April. 2018

[Link to text](#)



Bronze swords and shields from around the 8th - 9th century BC

Source: Photographed in the Museum in April. 2018

[Link to text](#)

Now a few large pictures from [museums in Paris](#)



One of the vitrines showing Luristan objects

[Link to text](#)

Source: Photographed in the Museum in Nov. 2021



The Achaemenid winged ibex

[Link to text](#)



The "Louvre" Scarface

Appears in several modules of this hyperscript; e.g. [here](#)

Source: Photographed in the Museum in April. 2018



A double-pyramis iron bar from Khorsabad
Possibly the only one still on display. Read [here](#) more about it.

Source: Photographed in the Museum in April. 2018



Mistress of Animals from Ugarit; 1300 - 1400 BC

Shown in the Louvre, Paris. I have a lot to say about these "master of Animals" renditions; e.g., her [../kap b/advanced/ab_1_2d.html](https://www.kap-b.com/advanced/ab_1_2d.html)

Source: Photographed in the Museum in Nov. 2021

[Link to some text](#)



Assyrian sword bearers from Khorsabad

Source: Photographed in the Museum in Nov. 2021

[Link to other reliefs like this](#)



Egyptian bronze daggers, Middle Empire, 2033 - 1710 BC

Source: Photographed in the Museum in April. 2018

[Link to text](#)

Source: Photographed in the Museum in Nov. 2021

[Link to text](#)