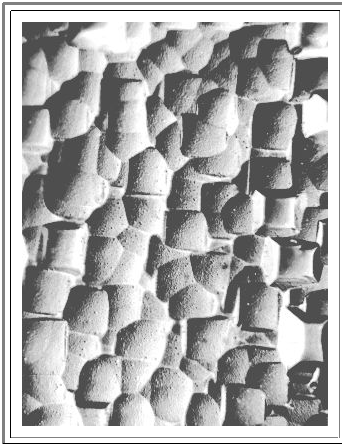


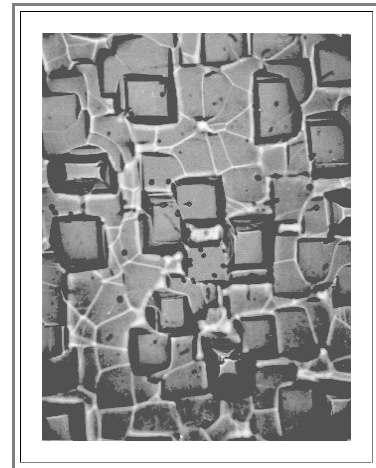
Process Induced Defects: Large View of Tweezer Marks and Dislocations

Illustration

Tweezer Marks



Dislocations



The tweezer marks consist of extremely small etch pits in high density - the hallmark of "**haze**". It is pretty safe to conclude that we are observing very small metal precipitates of some kind.

[Back to overview](#)

The dislocations are marked by large and deep etch pits; sometimes slightly inclined. With a little experience in defect etching, they cannot be mistaken for anything else.