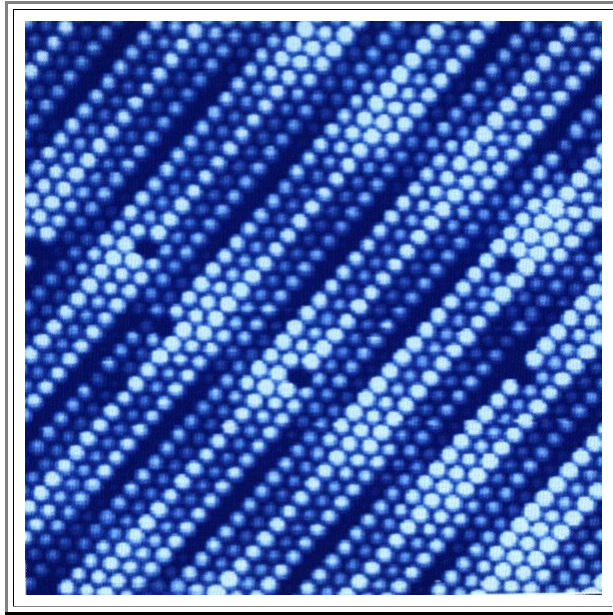


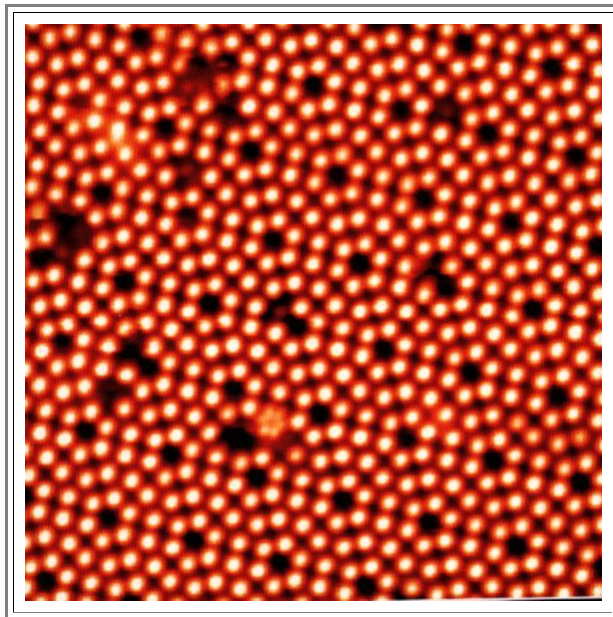
STM Images of Point Defects

Illustration

This is a **STM** image of a **Pt** surface. Vacancies are clearly visible



Next we see the clean **{111}** **Si** surface in ultra high vacuum conditions (otherwise the surface would immediately oxidize and we would see amorphous **SiO₂**).



The **{111}** surface looks not as one would expect from a straight model - it has "reconstructed". This means that the surface layer formed a two-dimensional crystal that is totally different from the **fcc Si** lattice (it has a so-called **7 × 7** symmetry). Still, point defects are clearly visible.

These fantastic pictures are all over the world. I do not know whom I should acknowledge, sorry.