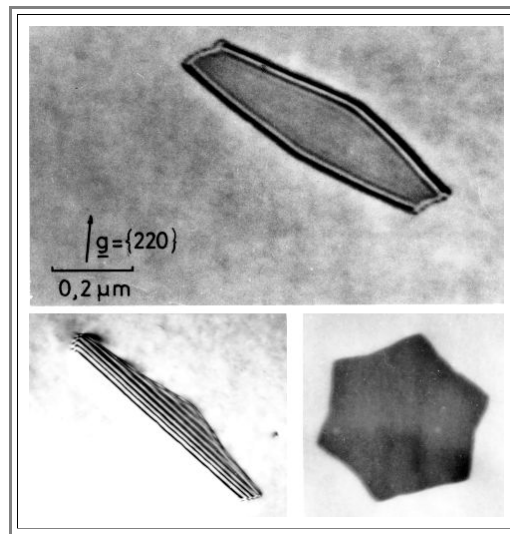


## Interstitial Agglomerates in Si

- Shown are small stacking fault loops, i.e. small platelets of **Si**-atoms wedged in between two **(111)** lattice planes. This then might be considered to be a two-dimensional agglomerate of **Si** self-interstitials.
- In the picture on the lower right the **(111)** plane is in the paper plane, in the other cases it is inclined; in the lower left case the (hexagonal) loop is truncated by the specimen surfaces.



- For more details about electron microscopy refer to [chapter 6.3.3](#)